

Datasheet for ABIN656588
anti-APBA2 antibody (AA 307-336)[Go to Product page](#)

1 Image

Overview

Quantity:	400 µL
Target:	APBA2
Binding Specificity:	AA 307-336
Reactivity:	Mouse
Host:	Rabbit
Clonality:	Polyclonal
Conjugate:	This APBA2 antibody is un-conjugated
Application:	Western Blotting (WB)

Product Details

Immunogen:	This APBA2 antibody is generated from rabbits immunized with a KLH conjugated synthetic peptide between 307-336 amino acids from the Central region of human APBA2.
Clone:	RB31057
Isotype:	Ig Fraction
Predicted Reactivity:	Rat
Purification:	This antibody is purified through a protein A column, followed by peptide affinity purification.

Target Details

Target:	APBA2
Alternative Name:	APBA2 (APBA2 Products)

Target Details

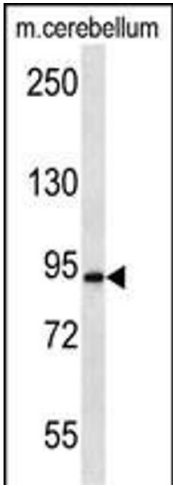
Background:	The protein encoded by this gene is a member of the X11 protein family. It is a neuronal adapter protein that interacts with the Alzheimer's disease amyloid precursor protein (APP). It stabilizes APP and inhibits production of proteolytic APP fragments including the A beta peptide that is deposited in the brains of Alzheimer's disease patients. This gene product is believed to be involved in signal transduction processes. It is also regarded as a putative vesicular trafficking protein in the brain that can form a complex with the potential to couple synaptic vesicle exocytosis to neuronal cell adhesion. Multiple transcript variants encoding different isoforms have been found for this gene. [provided by RefSeq].
Molecular Weight:	82512
Gene ID:	321
NCBI Accession:	NP_001123886 , NP_005494
UniProt:	Q99767
Pathways:	Synaptic Vesicle Exocytosis

Application Details

Application Notes:	WB: 1:1000
Restrictions:	For Research Use only

Handling

Format:	Liquid
Buffer:	Purified polyclonal antibody supplied in PBS with 0.09 % (W/V) sodium azide.
Preservative:	Sodium azide
Precaution of Use:	This product contains Sodium azide: a POISONOUS AND HAZARDOUS SUBSTANCE which should be handled by trained staff only.
Storage:	4 °C, -20 °C
Storage Comment:	APG10L Antibody (C-term S116) can be refrigerated at 2-8 °C for up to 6 months. For long term storage, place the at -20 °C.
Expiry Date:	6 months



Western Blotting

Image 1. BA2 Antibody (Center) 12659c western blot analysis in mouse cerebellum tissue lysates (35 μ g/lane). This demonstrates the BA2 antibody detected the BA2 protein (arrow).