

Datasheet for ABIN656591  
**anti-EBNA1BP2 antibody (C-Term)**[Go to Product page](#)

## 1 Image

## Overview

Quantity:	400 µL
Target:	EBNA1BP2
Binding Specificity:	AA 271-302, C-Term
Reactivity:	Human
Host:	Rabbit
Clonality:	Polyclonal
Conjugate:	This EBNA1BP2 antibody is un-conjugated
Application:	Western Blotting (WB)

## Product Details

Immunogen:	This EBNA1BP2 antibody is generated from rabbits immunized with a KLH conjugated synthetic peptide between 271-302 amino acids from the C-terminal region of human EBNA1BP2.
Clone:	RB31304
Isotype:	Ig Fraction
Purification:	This antibody is purified through a protein A column, followed by peptide affinity purification.

## Target Details

Target:	EBNA1BP2
Alternative Name:	EBNA1BP2 ( <a href="#">EBNA1BP2 Products</a> )

## Target Details

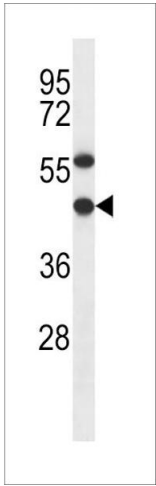
Background:	EBNA1BP2 is required for the processing of the 27S pre-rRNA (By similarity).
Molecular Weight:	34852
Gene ID:	10969
NCBI Accession:	<a href="#">NP_001153408</a> , <a href="#">NP_006815</a>
UniProt:	<a href="#">Q99848</a>

## Application Details

Application Notes:	WB: 1:1000
Restrictions:	For Research Use only

## Handling

Format:	Liquid
Buffer:	Purified polyclonal antibody supplied in PBS with 0.09 % (W/V) sodium azide.
Preservative:	Sodium azide
Precaution of Use:	This product contains Sodium azide: a POISONOUS AND HAZARDOUS SUBSTANCE which should be handled by trained staff only.
Storage:	4 °C, -20 °C
Storage Comment:	EBNA1BP2 Antibody (C-term) can be refrigerated at 2-8 °C for up to 6 months. For long term storage, place the at -20 °C.
Expiry Date:	6 months



Western Blotting

**Image 1.** EBNA1BP2 Antibody (C-term) (ABIN656591 and ABIN2845852) western blot analysis in NCI- cell line lysates (35 µg/lane).This demonstrates the EBNA1BP2 antibody detected the EBNA1BP2 protein (arrow).