

Datasheet for ABIN656594

**anti-GABRA4 antibody (AA 333-361)**[Go to Product page](#)**2** Images

## Overview

Quantity:	400 µL
Target:	GABRA4
Binding Specificity:	AA 333-361
Reactivity:	Human
Host:	Rabbit
Clonality:	Polyclonal
Conjugate:	This GABRA4 antibody is un-conjugated
Application:	Western Blotting (WB), Flow Cytometry (FACS)

## Product Details

Immunogen:	This GABRA4 antibody is generated from rabbits immunized with a KLH conjugated synthetic peptide between 333-361 amino acids from the Central region of human GABRA4.
Clone:	RB31338
Isotype:	Ig Fraction
Purification:	This antibody is purified through a protein A column, followed by peptide affinity purification.

## Target Details

Target:	GABRA4
Alternative Name:	GABRA4 ( <a href="#">GABRA4 Products</a> )
Background:	GABA is the major inhibitory neurotransmitter in the mammalian brain where it acts at GABA-A

## Target Details

receptors, which are ligand-gated chloride channels. Chloride conductance of these channels can be modulated by agents such as benzodiazepines that bind to the GABA-A receptor. At least 16 distinct subunits of GABA-A receptors have been identified.

Molecular Weight: 61623

Gene ID: 2557

NCBI Accession: [NP\\_000800](#), [NP\\_001191195](#), [NP\\_001191196](#)

UniProt: [P48169](#)

Pathways: [Synaptic Membrane](#)

## Application Details

Application Notes: WB: 1:1000. FC: 1:10~50

Restrictions: For Research Use only

## Handling

Format: Liquid

Buffer: Purified polyclonal antibody supplied in PBS with 0.09 % (W/V) sodium azide.

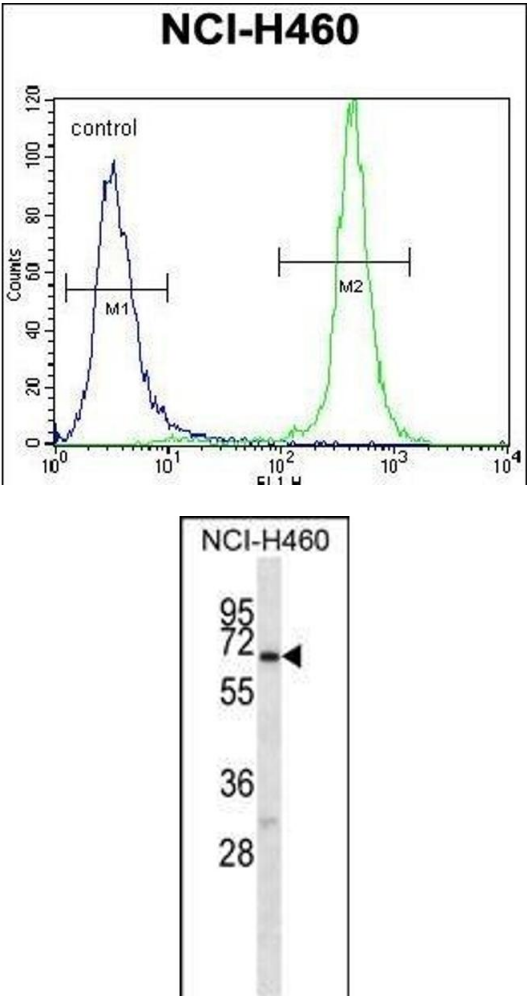
Preservative: Sodium azide

Precaution of Use: This product contains Sodium azide: a POISONOUS AND HAZARDOUS SUBSTANCE which should be handled by trained staff only.

Storage: 4 °C, -20 °C

Storage Comment: GABRA4 Antibody (Center) can be refrigerated at 2-8 °C for up to 6 months. For long term storage, place the at -20 °C.

Expiry Date: 6 months



### Flow Cytometry

**Image 1.** GABRA4 Antibody (Center) (ABIN656594 and ABIN2845855) flow cytometric analysis of NCI- cells (right histogram) compared to a negative control cell (left histogram).FITC-conjugated goat-anti-rabbit secondary antibodies were used for the analysis.

### Western Blotting

**Image 2.** GABRA4 Antibody (Center) (ABIN656594 and ABIN2845855) western blot analysis in NCI- cell line lysates (35 µg/lane).This demonstrates the GABRA4 antibody detected the GABRA4 protein (arrow).