

Datasheet for ABIN656595  
**anti-MED22 antibody (N-Term)**[Go to Product page](#)

## 1 Image

## Overview

Quantity:	400 µL
Target:	MED22
Binding Specificity:	AA 1-30, N-Term
Reactivity:	Human
Host:	Rabbit
Clonality:	Polyclonal
Application:	Western Blotting (WB)

## Product Details

Immunogen:	This MED22 antibody is generated from rabbits immunized with a KLH conjugated synthetic peptide between 1-30 amino acids from the N-terminal region of human MED22.
Clone:	RB31353
Isotype:	Ig Fraction
Predicted Reactivity:	M, Rat, X
Purification:	This antibody is purified through a protein A column, followed by peptide affinity purification.

## Target Details

Target:	MED22
Alternative Name:	MED22 ( <a href="#">MED22 Products</a> )
Background:	This gene is located in the surfeit gene cluster, a group of very tightly linked housekeeping

## Target Details

genes that do not share sequence similarity. The gene is oriented in a head-to-head fashion with RPL7A (SURF3) and the two genes share a bidirectional promoter. The encoded proteins are localized to the cytoplasm. Two alternative transcript variants encoding different isoforms have been identified for this gene.

Molecular Weight: 22221

Gene ID: 6837

NCBI Accession: [NP\\_598395](#), [NP\\_852468](#)

UniProt: [Q15528](#)

Pathways: [Regulation of Lipid Metabolism by PPARalpha](#)

## Application Details

Application Notes: WB: 1:1000

Restrictions: For Research Use only

## Handling

Format: Liquid

Buffer: Purified polyclonal antibody supplied in PBS with 0.09 % (W/V) sodium azide.

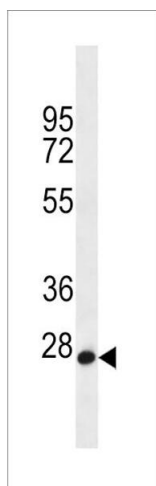
Preservative: Sodium azide

Precaution of Use: This product contains Sodium azide: a POISONOUS AND HAZARDOUS SUBSTANCE which should be handled by trained staff only.

Storage: 4 °C,-20 °C

Storage Comment: MED22 Antibody (N-term) can be refrigerated at 2-8 °C for up to 6 months. For long term storage, place the at -20 °C.

Expiry Date: 6 months



#### Western Blotting

**Image 1.** MED22 Antibody (N-term) (ABIN656595 and ABIN2845856) western blot analysis in HL-60 cell line lysates (35 µg/lane). This demonstrates the MED22 antibody detected the MED22 protein (arrow).