



[Go to Product page](#)

Datasheet for ABIN656606

## anti-C15orf40 antibody (C-Term)

### 2 Images

#### Overview

Quantity:	400 µL
Target:	C15orf40
Binding Specificity:	AA 72-100, C-Term
Reactivity:	Human
Host:	Rabbit
Clonality:	Polyclonal
Conjugate:	This C15orf40 antibody is un-conjugated
Application:	Western Blotting (WB), Immunohistochemistry (Paraffin-embedded Sections) (IHC (p))

#### Product Details

Immunogen:	This CO040 antibody is generated from rabbits immunized with a KLH conjugated synthetic peptide between 72-100 amino acids from the C-terminal region of human CO040.
Clone:	RB31462
Isotype:	Ig Fraction
Predicted Reactivity:	B, M, Rat
Purification:	This antibody is purified through a protein A column, followed by peptide affinity purification.

#### Target Details

Target:	C15orf40
Alternative Name:	CO040 ( <a href="#">C15orf40 Products</a> )

## Target Details

---

Background: The function of this protein remains unknown.

Molecular Weight: 16353

Gene ID: 123207

NCBI Accession: [NP\\_001153587](#), [NP\\_001153588](#), [NP\\_653198](#)

UniProt: [Q8WUR7](#)

## Application Details

---

Application Notes: WB: 1:1000. IHC-P: 1:10~50

Restrictions: For Research Use only

## Handling

---

Format: Liquid

Buffer: Purified polyclonal antibody supplied in PBS with 0.09 % (W/V) sodium azide.

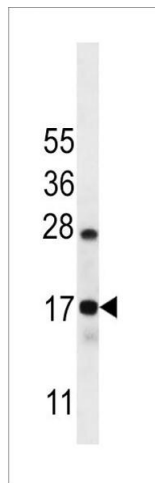
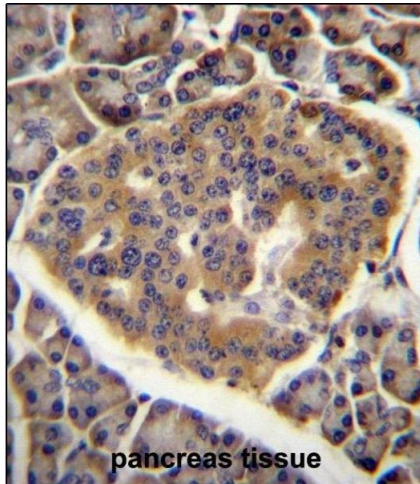
Preservative: Sodium azide

Precaution of Use: This product contains Sodium azide: a POISONOUS AND HAZARDOUS SUBSTANCE which should be handled by trained staff only.

Storage: 4 °C,-20 °C

Storage Comment: CO040 Antibody (C-term) can be refrigerated at 2-8 °C for up to 6 months. For long term storage, place the at -20 °C.

Expiry Date: 6 months



### Immunohistochemistry (Paraffin-embedded Sections)

**Image 1.** C Antibody (C-term) (ABIN656606 and ABIN2845863) immunohistochemistry analysis in formalin fixed and paraffin embedded human pancreas tissue followed by peroxidase conjugation of the secondary antibody and DAB staining. This data demonstrates the use of C Antibody (C-term) for immunohistochemistry. Clinical relevance has not been evaluated.

### Western Blotting

**Image 2.** C Antibody (C-term) (ABIN656606 and ABIN2845863) western blot analysis in Ramos cell line lysates (35 µg/lane). This demonstrates the C antibody detected the C protein (arrow).