



[Go to Product page](#)

Datasheet for ABIN656608  
**anti-Cnrip1 antibody (AA 76-104)**

2 Images

### Overview

Quantity:	400 µL
Target:	Cnrip1
Binding Specificity:	AA 76-104
Reactivity:	Human
Host:	Rabbit
Clonality:	Polyclonal
Application:	Western Blotting (WB), Immunohistochemistry (Paraffin-embedded Sections) (IHC (p))

### Product Details

Immunogen:	This CNRP1 antibody is generated from rabbits immunized with a KLH conjugated synthetic peptide between 76-104 amino acids from the Central region of human CNRP1.
Clone:	RB31464
Isotype:	Ig Fraction
Predicted Reactivity:	Pr
Purification:	This antibody is purified through a protein A column, followed by peptide affinity purification.

### Target Details

Target:	Cnrip1
Alternative Name:	CNRP1 ( <a href="#">Cnrip1 Products</a> )
Background:	This gene encodes a G-protein coupled receptor which interacts with the C-terminal tail of

## Target Details

---

cannabinoid receptor 1. This receptor plays a role in synaptic plasticity, analgesia, appetite, and neuroprotection. Two transcript variants encoding different isoforms have been described for this gene.

Molecular Weight:	18648
Gene ID:	25927
NCBI Accession:	<a href="#">NP_001104571</a> , <a href="#">NP_056278</a>
UniProt:	<a href="#">Q96F85</a>

## Application Details

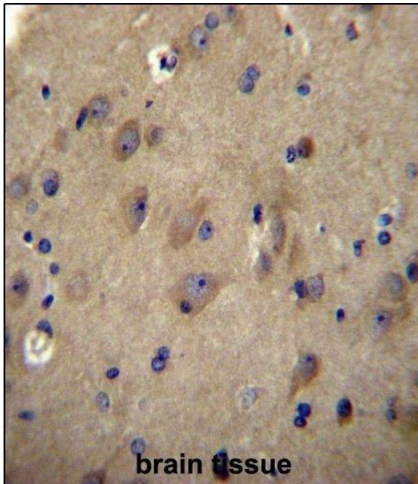
---

Application Notes:	WB: 1:1000. IHC-P: 1:10~50
Restrictions:	For Research Use only

## Handling

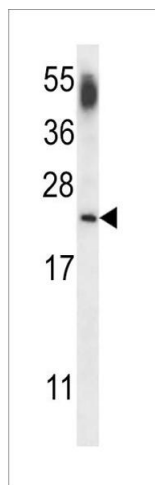
---

Format:	Liquid
Buffer:	Purified polyclonal antibody supplied in PBS with 0.09 % (W/V) sodium azide.
Preservative:	Sodium azide
Precaution of Use:	This product contains Sodium azide: a POISONOUS AND HAZARDOUS SUBSTANCE which should be handled by trained staff only.
Storage:	4 °C, -20 °C
Storage Comment:	CNRP1 Antibody (Center) can be refrigerated at 2-8 °C for up to 6 months. For long term storage, place the at -20 °C.
Expiry Date:	6 months



### Immunohistochemistry (Paraffin-embedded Sections)

**Image 1.** CNRP1 Antibody (Center) (ABIN656608 and ABIN2845865) immunohistochemistry analysis in formalin fixed and paraffin embedded human brain tissue followed by peroxidase conjugation of the secondary antibody and DAB staining. This data demonstrates the use of CNRP1 Antibody (Center) for immunohistochemistry. Clinical relevance has not been evaluated.



### Western Blotting

**Image 2.** Western blot analysis of lysate from human brain tissue lysate, using CNRP1 Antibody (Center) (ABIN656608 and ABIN2845865). (ABIN656608 and ABIN2845865) was diluted at 1:1000 at each lane. A goat anti-rabbit IgG H&L(HRP) at 1:5000 dilution was used as the secondary antibody. Lysate at 35 µg per lane.