

Datasheet for ABIN656609

**anti-FAM33A antibody (N-Term)**[Go to Product page](#)**2** Images

## Overview

Quantity:	400 µL
Target:	FAM33A
Binding Specificity:	AA 9-37, N-Term
Reactivity:	Human
Host:	Rabbit
Clonality:	Polyclonal
Conjugate:	This FAM33A antibody is un-conjugated
Application:	Western Blotting (WB), Immunohistochemistry (Paraffin-embedded Sections) (IHC (p))

## Product Details

Immunogen:	This SKA2 antibody is generated from rabbits immunized with a KLH conjugated synthetic peptide between 9-37 amino acids from the N-terminal region of human SKA2.
Clone:	RB31468
Isotype:	Ig Fraction
Predicted Reactivity:	Pr
Purification:	This antibody is purified through a protein A column, followed by peptide affinity purification.

## Target Details

Target:	FAM33A
Alternative Name:	SKA2 ( <a href="#">FAM33A Products</a> )

## Target Details

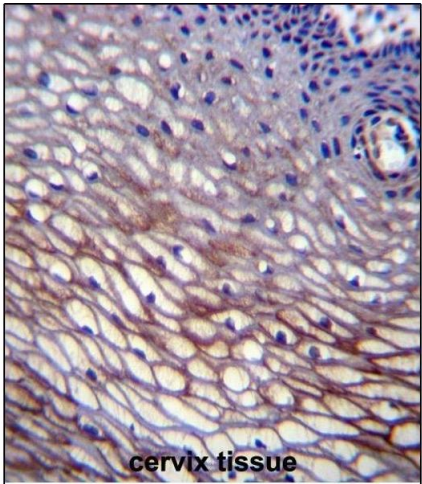
Background:	Component of the SKA1 complex, a microtubule-binding subcomplex of the outer kinetochore that is essential for proper chromosome segregation. Required for timely anaphase onset during mitosis, when chromosomes undergo bipolar attachment on spindle microtubules leading to silencing of the spindle checkpoint. The SKA1 complex is a direct component of the kinetochore-microtubule interface and directly associates with microtubules as oligomeric assemblies. The complex facilitates the processive movement of microspheres along a microtubule in a depolymerization-coupled manner. In the complex, it is required for SKA1 localization.
Molecular Weight:	14188
Gene ID:	348235
NCBI Accession:	<a href="#">NP_001094065</a> , <a href="#">NP_872426</a>
UniProt:	<a href="#">Q8WVK7</a>
Pathways:	<a href="#">M Phase</a>

## Application Details

Application Notes:	WB: 1:1000. IHC-P: 1:10~50
Restrictions:	For Research Use only

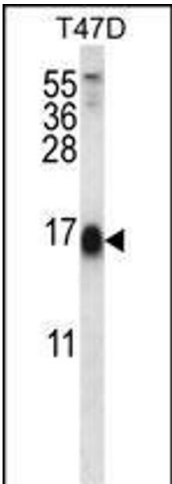
## Handling

Format:	Liquid
Buffer:	Purified polyclonal antibody supplied in PBS with 0.09 % (W/V) sodium azide.
Preservative:	Sodium azide
Precaution of Use:	This product contains Sodium azide: a POISONOUS AND HAZARDOUS SUBSTANCE which should be handled by trained staff only.
Storage:	4 °C, -20 °C
Storage Comment:	SKA2 Antibody (N-term) can be refrigerated at 2-8 °C for up to 6 months. For long term storage, place the at -20 °C.
Expiry Date:	6 months



**Immunohistochemistry (Paraffin-embedded Sections)**

**Image 1.** SKA2 Antibody (N-term) (ABIN656609 and ABIN2845866) immunohistochemistry analysis in formalin fixed and paraffin embedded human cervix tissue followed by peroxidase conjugation of the secondary antibody and DAB staining. This data demonstrates the use of SKA2 Antibody (N-term) for immunohistochemistry. Clinical relevance has not been evaluated.



**Western Blotting**

**Image 2.** SKA2 Antibody (N-term) (ABIN656609 and ABIN2845866) western blot analysis in T47D cell line lysates (35 µg/lane). This demonstrates the SKA2 antibody detected the SKA2 protein (arrow).