

Datasheet for ABIN656616  
**anti-GRXCR1 antibody (AA 83-112)**[Go to Product page](#)

## 1 Image

## Overview

Quantity:	400 µL
Target:	GRXCR1
Binding Specificity:	AA 83-112
Reactivity:	Mouse
Host:	Rabbit
Clonality:	Polyclonal
Conjugate:	This GRXCR1 antibody is un-conjugated
Application:	Western Blotting (WB)

## Product Details

Immunogen:	This GRXCR1 antibody is generated from rabbits immunized with a KLH conjugated synthetic peptide between 83-112 amino acids from the Central region of human GRXCR1.
Clone:	RB31540
Isotype:	Ig Fraction
Purification:	This antibody is purified through a protein A column, followed by peptide affinity purification.

## Target Details

Target:	GRXCR1
Alternative Name:	GRXCR1 ( <a href="#">GRXCR1 Products</a> )
Background:	This gene is one of 60 loci associated with autosomal-recessive nonsyndromic hearing

## Target Details

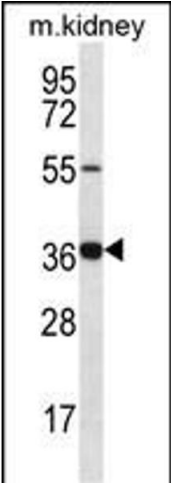
	impairment. This gene encodes a protein which contains GRX-like domains, these domains play a role in the S-glutathionylation of proteins and may be involved in actin organization in hair cells.
Molecular Weight:	32294
Gene ID:	389207
NCBI Accession:	<a href="#">NP_001073945</a>
UniProt:	<a href="#">A8MXD5</a>
Pathways:	<a href="#">Sensory Perception of Sound</a> , <a href="#">Cell RedoxHomeostasis</a>

## Application Details

Application Notes:	WB: 1:1000
Restrictions:	For Research Use only

## Handling

Format:	Liquid
Buffer:	Purified polyclonal antibody supplied in PBS with 0.09 % (W/V) sodium azide.
Preservative:	Sodium azide
Precaution of Use:	This product contains Sodium azide: a POISONOUS AND HAZARDOUS SUBSTANCE which should be handled by trained staff only.
Storage:	4 °C,-20 °C
Storage Comment:	GRXCR1 Antibody (Center) can be refrigerated at 2-8 °C for up to 6 months. For long term storage, place the at -20 °C.
Expiry Date:	6 months



Western Blotting

**Image 1.** GRXCR1 Antibody (Center) (ABIN656616 and ABIN2845869) western blot analysis in mouse kidney tissue lysates (35 µg/lane). This demonstrates the GRXCR1 antibody detected the GRXCR1 protein (arrow).