

Datasheet for ABIN656617  
**anti-SLC38A8 antibody (AA 149-177)**[Go to Product page](#)

## 1 Image

## Overview

Quantity:	400 µL
Target:	SLC38A8
Binding Specificity:	AA 149-177
Reactivity:	Human
Host:	Rabbit
Clonality:	Polyclonal
Conjugate:	This SLC38A8 antibody is un-conjugated
Application:	Western Blotting (WB)

## Product Details

Immunogen:	This SLC38A8 antibody is generated from rabbits immunized with a KLH conjugated synthetic peptide between 149-177 amino acids from the Central region of human SLC38A8.
Clone:	RB31554
Isotype:	Ig Fraction
Purification:	This antibody is purified through a protein A column, followed by peptide affinity purification.

## Target Details

Target:	SLC38A8
Alternative Name:	SLC38A8 ( <a href="#">SLC38A8 Products</a> )
Background:	SLC38A8 is a putative sodium-dependent amino acid/proton antiporter (By similarity).

## Target Details

Molecular Weight:	46731
Gene ID:	146167
NCBI Accession:	<a href="#">NP_001073911</a>
UniProt:	<a href="#">A6NNN8</a>

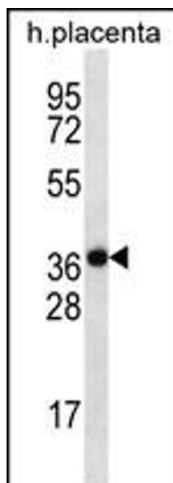
## Application Details

Application Notes:	WB: 1:1000
Restrictions:	For Research Use only

## Handling

Format:	Liquid
Buffer:	Purified polyclonal antibody supplied in PBS with 0.09 % (W/V) sodium azide.
Preservative:	Sodium azide
Precaution of Use:	This product contains Sodium azide: a POISONOUS AND HAZARDOUS SUBSTANCE which should be handled by trained staff only.
Storage:	4 °C, -20 °C
Storage Comment:	SLC38A8 Antibody (Center) can be refrigerated at 2-8 °C for up to 6 months. For long term storage, place the at -20 °C.
Expiry Date:	6 months

## Images



### Western Blotting

**Image 1.** SLC38A8 Antibody (Center) (ABIN656617 and ABIN2845870) western blot analysis in human placenta tissue lysates (35 µg/lane). This demonstrates the SLC38A8 antibody detected the SLC38A8 protein (arrow).