



[Go to Product page](#)

Datasheet for ABIN656625
anti-KRT222 antibody (C-Term)

1 Image

Overview

| | |
|----------------------|---------------------------------------|
| Quantity: | 400 µL |
| Target: | KRT222 |
| Binding Specificity: | AA 222-250, C-Term |
| Reactivity: | Mouse |
| Host: | Rabbit |
| Clonality: | Polyclonal |
| Conjugate: | This KRT222 antibody is un-conjugated |
| Application: | Western Blotting (WB) |

Product Details

| | |
|-----------------------|--|
| Immunogen: | This KRT222P antibody is generated from rabbits immunized with a KLH conjugated synthetic peptide between 222-250 amino acids from the C-terminal region of human KRT222P. |
| Clone: | RB32011 |
| Isotype: | Ig Fraction |
| Predicted Reactivity: | B |
| Purification: | This antibody is purified through a protein A column, followed by peptide affinity purification. |

Target Details

| | |
|-------------------|---|
| Target: | KRT222 |
| Alternative Name: | KRT222P (KRT222 Products) |

Target Details

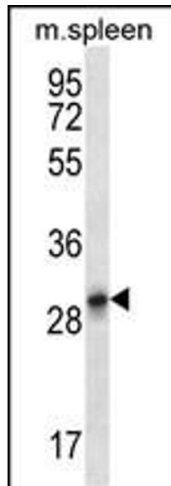
| | |
|-------------------|--|
| Background: | KRT222P belongs to the intermediate filament family. The exact function of KRT222P is not known. |
| Molecular Weight: | 34158 |
| Gene ID: | 125113 |
| NCBI Accession: | NP_689562 |
| UniProt: | Q8N1A0 |

Application Details

| | |
|--------------------|-----------------------|
| Application Notes: | WB: 1:1000 |
| Restrictions: | For Research Use only |

Handling

| | |
|--------------------|---|
| Format: | Liquid |
| Buffer: | Purified polyclonal antibody supplied in PBS with 0.09 % (W/V) sodium azide. |
| Preservative: | Sodium azide |
| Precaution of Use: | This product contains Sodium azide: a POISONOUS AND HAZARDOUS SUBSTANCE which should be handled by trained staff only. |
| Storage: | 4 °C,-20 °C |
| Storage Comment: | KRT222P Antibody (C-term) can be refrigerated at 2-8 °C for up to 6 months. For long term storage, place the at -20 °C. |
| Expiry Date: | 6 months |



Western Blotting

Image 1. KRT222P Antibody (C-term) (ABIN656625 and ABIN2845872) western blot analysis in mouse spleen tissue lysates (35 µg/lane). This demonstrates the KRT222P antibody detected the KRT222P protein (arrow).