



[Go to Product page](#)

Datasheet for ABIN656629

## anti-LRRN4CL antibody (AA 117-146)

### 2 Images

#### Overview

Quantity:	400 µL
Target:	LRRN4CL
Binding Specificity:	AA 117-146
Reactivity:	Human
Host:	Rabbit
Clonality:	Polyclonal
Conjugate:	This LRRN4CL antibody is un-conjugated
Application:	Western Blotting (WB), Immunohistochemistry (Paraffin-embedded Sections) (IHC (p))

#### Product Details

Immunogen:	This LRRN4CL antibody is generated from rabbits immunized with a KLH conjugated synthetic peptide between 117-146 amino acids from the Central region of human LRRN4CL.
Clone:	RB32035
Isotype:	Ig Fraction
Predicted Reactivity:	M
Purification:	This antibody is purified through a protein A column, followed by peptide affinity purification.

#### Target Details

Target:	LRRN4CL
Alternative Name:	LRRN4CL ( <a href="#">LRRN4CL Products</a> )

## Target Details

Background:	LRRN4CL contains one fibronectin type-III domain.
Gene ID:	221091
NCBI Accession:	<a href="#">NP_981967</a>
UniProt:	<a href="#">Q8ND94</a>

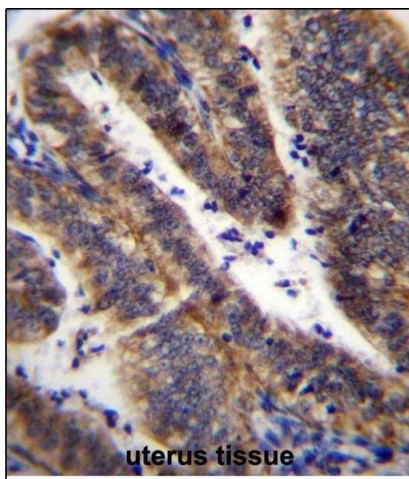
## Application Details

Application Notes:	WB: 1:1000. IHC-P: 1:10~50
Restrictions:	For Research Use only

## Handling

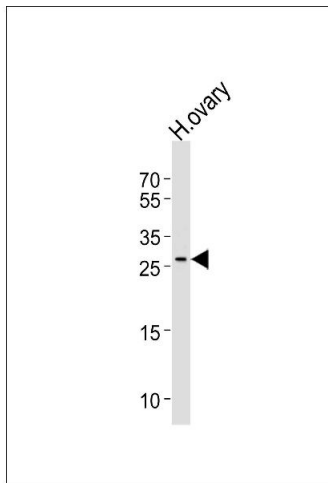
Format:	Liquid
Buffer:	Purified polyclonal antibody supplied in PBS with 0.09 % (W/V) sodium azide.
Preservative:	Sodium azide
Precaution of Use:	This product contains Sodium azide: a POISONOUS AND HAZARDOUS SUBSTANCE which should be handled by trained staff only.
Storage:	4 °C,-20 °C
Storage Comment:	LRRN4CL Antibody (Center) can be refrigerated at 2-8 °C for up to 6 months. For long term storage, place the at -20 °C.
Expiry Date:	6 months

## Images



### Immunohistochemistry (Paraffin-embedded Sections)

**Image 1.** LRRN4CL Antibody (Center) (ABIN656629 and ABIN2845875) immunohistochemistry analysis in formalin fixed and paraffin embedded human uterus tissue followed by peroxidase conjugation of the secondary antibody and DAB staining. This data demonstrates the use of LRRN4CL Antibody (Center) for immunohistochemistry. Clinical relevance has not been evaluated.



### Western Blotting

**Image 2.** Western blot analysis of lysate from human ovary tissue lysate, using LRRN4CL Antibody (Center) (ABIN656629 and ABIN2845875). (ABIN656629 and ABIN2845875) was diluted at 1:1000 at each lane. A goat anti-rabbit IgG H&L(HRP) at 1:5000 dilution was used as the secondary antibody. Lysate at 35  $\mu$ g per lane.