



[Go to Product page](#)

Datasheet for ABIN656634
anti-GPS1 antibody (AA 141-170)

1 Image

Overview

Quantity:	400 µL
Target:	GPS1
Binding Specificity:	AA 141-170
Reactivity:	Mouse
Host:	Rabbit
Clonality:	Polyclonal
Conjugate:	This GPS1 antibody is un-conjugated
Application:	Western Blotting (WB)

Product Details

Immunogen:	This GPS1 antibody is generated from rabbits immunized with a KLH conjugated synthetic peptide between 141-170 amino acids from the Central region of human GPS1.
Clone:	RB32094
Isotype:	Ig Fraction
Predicted Reactivity:	Rat, X
Purification:	This antibody is purified through a protein A column, followed by peptide affinity purification.

Target Details

Target:	GPS1
Alternative Name:	GPS1 (GPS1 Products)

Target Details

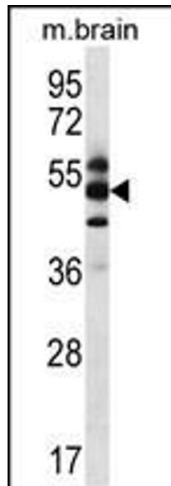
Background:	This gene is known to suppress G-protein and mitogen-activated signal transduction in mammalian cells. The encoded protein shares significant similarity with Arabidopsis FUS6, which is a regulator of light-mediated signal transduction in plant cells. Two alternatively spliced transcript variants encoding different isoforms have been found for this gene. [provided by RefSeq].
Molecular Weight:	55537
Gene ID:	2873
NCBI Accession:	NP_004118 , NP_997657
UniProt:	Q13098
Pathways:	Cell Division Cycle

Application Details

Application Notes:	WB: 1:1000
Restrictions:	For Research Use only

Handling

Format:	Liquid
Buffer:	Purified polyclonal antibody supplied in PBS with 0.09 % (W/V) sodium azide.
Preservative:	Sodium azide
Precaution of Use:	This product contains Sodium azide: a POISONOUS AND HAZARDOUS SUBSTANCE which should be handled by trained staff only.
Storage:	4 °C, -20 °C
Storage Comment:	GPS1 Antibody (Center) can be refrigerated at 2-8 °C for up to 6 months. For long term storage, place the at -20 °C.
Expiry Date:	6 months



Western Blotting

Image 1. GPS1 Antibody (Center) (ABIN656634 and ABIN2845879) western blot analysis in mouse brain tissue lysates (35 µg/lane). This demonstrates the GPS1 antibody detected the GPS1 protein (arrow).