



Datasheet for ABIN656635
anti-LPAR6 antibody (AA 106-134)



[Go to Product page](#)

4 Images

Overview

Quantity:	400 µL
Target:	LPAR6
Binding Specificity:	AA 106-134
Reactivity:	Human, Mouse, Rat
Host:	Rabbit
Clonality:	Polyclonal
Conjugate:	This LPAR6 antibody is un-conjugated
Application:	Western Blotting (WB), Immunohistochemistry (Paraffin-embedded Sections) (IHC (p))

Product Details

Immunogen:	This LPAR6 antibody is generated from rabbits immunized with a KLH conjugated synthetic peptide between 106-134 amino acids from the Central region of human LPAR6.
Clone:	RB32125
Isotype:	Ig Fraction
Predicted Reactivity:	Rat
Purification:	This antibody is purified through a protein A column, followed by peptide affinity purification.

Target Details

Target:	LPAR6
Alternative Name:	LPAR6 (LPAR6 Products)

Target Details

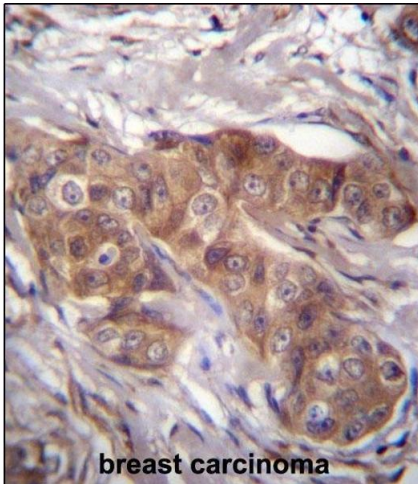
Background:	The protein encoded by this gene belongs to the family of G-protein coupled receptors, that are preferentially activated by adenosine and uridine nucleotides. This gene aligns with an internal intron of the retinoblastoma susceptibility gene in the reverse orientation. Alternative splicing results in multiple transcript variants.
Molecular Weight:	39392
Gene ID:	10161
NCBI Accession:	NP_001155969 , NP_001155970 , NP_005758
UniProt:	P43657

Application Details

Application Notes:	WB: 1:1000. WB: 1:2000. WB: 1:1000. IHC-P: 1:10~50
Restrictions:	For Research Use only

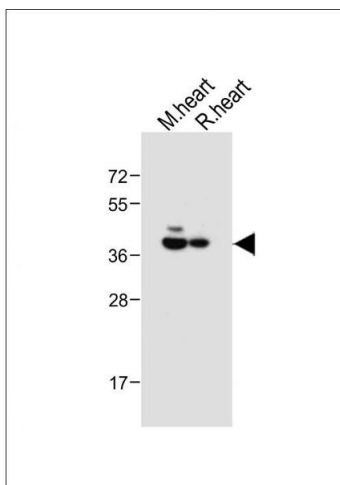
Handling

Format:	Liquid
Buffer:	Purified polyclonal antibody supplied in PBS with 0.09 % (W/V) sodium azide.
Preservative:	Sodium azide
Precaution of Use:	This product contains Sodium azide: a POISONOUS AND HAZARDOUS SUBSTANCE which should be handled by trained staff only.
Storage:	4 °C,-20 °C
Storage Comment:	LPAR6 Antibody (Center) can be refrigerated at 2-8 °C for up to 6 months. For long term storage, place the at -20 °C.
Expiry Date:	6 months



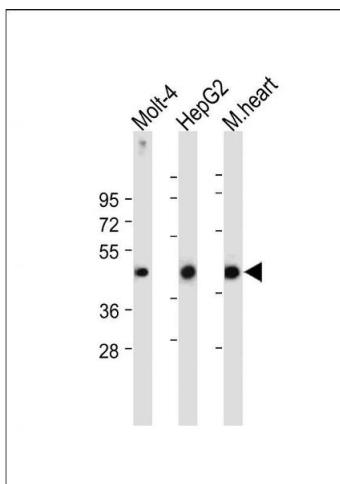
Immunohistochemistry (Paraffin-embedded Sections)

Image 1. LR6 Antibody (Center) (ABIN656635 and ABIN2845880) immunohistochemistry analysis in formalin fixed and paraffin embedded human breast carcinoma followed by peroxidase conjugation of the secondary antibody and DAB staining. This data demonstrates the use of LR6 Antibody (Center) for immunohistochemistry. Clinical relevance has not been evaluated.



Western Blotting

Image 2. All lanes : Anti-LR6 Antibody (Center) at 1:1000 dilution Lane 1: Mouse heart tissue lysate Lane 2: Rat heart tissue lysate Lysates/proteins at 20 µg per lane. Secondary Goat Anti-Rabbit IgG, (H+L), Peroxidase conjugated at 1/10000 dilution. Predicted band size : 39 kDa Blocking/Dilution buffer: 5 % NFDN/TBST.



Western Blotting

Image 3. All lanes : Anti-LR6 Antibody (Center) at 1:2000 dilution Lane 1: Molt-4 whole cell lysate Lane 2: HepG2 whole cell lysate Lane 3: Mouse heart tissue lysate Lysates/proteins at 20 µg per lane. Secondary Goat Anti-Rabbit IgG, (H+L), Peroxidase conjugated at 1/10000 dilution. Predicted band size : 39 kDa Blocking/Dilution buffer: 5 % NFDN/TBST.

Please check the [product details page](#) for more images. Overall 4 images are available for ABIN656635.