

Datasheet for ABIN656638

**anti-Histone 2b (HIST1H2BL) (AA 1-30), (N-Term) antibody**[Go to Product page](#)**2** Images

## Overview

Quantity:	400 µL
Target:	Histone 2b (HIST1H2BL)
Binding Specificity:	AA 1-30, N-Term
Reactivity:	Human
Host:	Rabbit
Clonality:	Polyclonal
Conjugate:	Un-conjugated
Application:	Western Blotting (WB), Flow Cytometry (FACS)

## Product Details

Immunogen:	This HIST1H2BL antibody is generated from rabbits immunized with a KLH conjugated synthetic peptide between 1-30 amino acids from the N-terminal region of human HIST1H2BL.
Clone:	RB32146
Isotype:	Ig Fraction
Predicted Reactivity:	M
Purification:	This antibody is purified through a protein A column, followed by peptide affinity purification.

## Target Details

Target:	Histone 2b (HIST1H2BL)
Alternative Name:	HIST1H2BL ( <a href="#">HIST1H2BL Products</a> )

## Target Details

**Background:** Histones are basic nuclear proteins that are responsible for the nucleosome structure of the chromosomal fiber in eukaryotes. Two molecules of each of the four core histones (H2A, H2B, H3, and H4) form an octamer, around which approximately 146 bp of DNA is wrapped in repeating units, called nucleosomes. The linker histone, H1, interacts with linker DNA between nucleosomes and functions in the compaction of chromatin into higher order structures. This gene is intronless and encodes a member of the histone H2B family. Transcripts from this gene lack polyA tails but instead contain a palindromic termination element. This gene is found in the small histone gene cluster on chromosome 6p22-p21.3.

**Molecular Weight:** 13952

**Gene ID:** 8340

**NCBI Accession:** [NP\\_003510](#)

**UniProt:** [Q99880](#)

## Application Details

**Application Notes:** WB: 1:1000. FC: 1:10~50

**Restrictions:** For Research Use only

## Handling

**Format:** Liquid

**Buffer:** Purified polyclonal antibody supplied in PBS with 0.09 % (W/V) sodium azide.

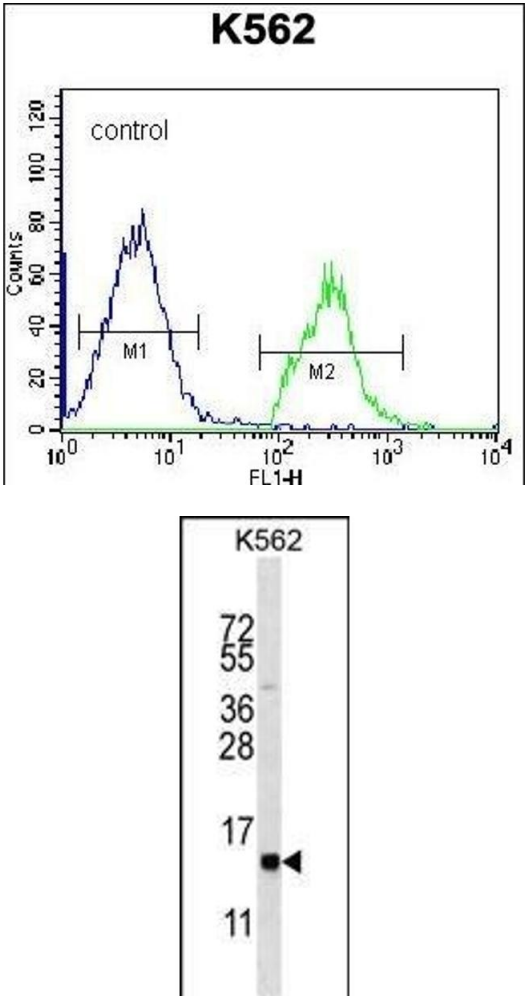
**Preservative:** Sodium azide

**Precaution of Use:** This product contains Sodium azide: a POISONOUS AND HAZARDOUS SUBSTANCE which should be handled by trained staff only.

**Storage:** 4 °C,-20 °C

**Storage Comment:** HIST1H2BL Antibody (N-term) can be refrigerated at 2-8 °C for up to 6 months. For long term storage, place the at -20 °C.

**Expiry Date:** 6 months



Flow Cytometry

**Image 1.** HIST1H2BL Antibody (N-term) (ABIN656638 and ABIN2845883) flow cytometric analysis of K562 cells (right histogram) compared to a negative control cell (left histogram).FITC-conjugated goat-anti-rabbit secondary antibodies were used for the analysis.

Western Blotting

**Image 2.** HIST1H2BL Antibody (N-term) (ABIN656638 and ABIN2845883) western blot analysis in K562 cell line lysates (35 µg/lane).This demonstrates the HIST1H2BL antibody detected the HIST1H2BL protein (arrow).