

Datasheet for ABIN656643  
**anti-GTPBP10 antibody (C-Term)**[Go to Product page](#)

## 3 Images

## Overview

Quantity:	400 µL
Target:	GTPBP10
Binding Specificity:	AA 243-271, C-Term
Reactivity:	Human, Mouse
Host:	Rabbit
Clonality:	Polyclonal
Conjugate:	This GTPBP10 antibody is un-conjugated
Application:	Western Blotting (WB)

## Product Details

Immunogen:	This GTPBP10 antibody is generated from rabbits immunized with a KLH conjugated synthetic peptide between 243-271 amino acids from the C-terminal region of human GTPBP10.
Clone:	RB32309
Isotype:	Ig Fraction
Purification:	This antibody is purified through a protein A column, followed by peptide affinity purification.

## Target Details

Target:	GTPBP10
Alternative Name:	GTPBP10 ( <a href="#">GTPBP10 Products</a> )
Background:	Small G proteins, such as GTPBP10, act as molecular switches that play crucial roles in the

## Target Details

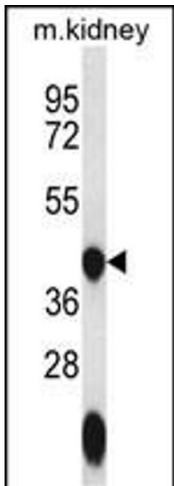
	regulation of fundamental cellular processes such as protein synthesis, nuclear transport, membrane trafficking, and signal transduction (Hirano et al., 2006 [PubMed 17054726]).
Molecular Weight:	42933
Gene ID:	85865
NCBI Accession:	<a href="#">NP_001036182</a> , <a href="#">NP_149098</a>
UniProt:	<a href="#">A4D1E9</a>

## Application Details

Application Notes:	WB: 1:1000. WB: 1:1000. WB: 1:1000
Restrictions:	For Research Use only

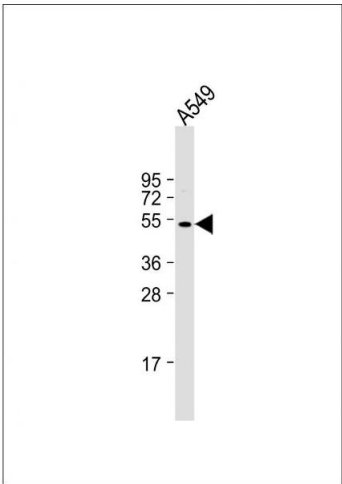
## Handling

Format:	Liquid
Buffer:	Purified polyclonal antibody supplied in PBS with 0.09 % (W/V) sodium azide.
Preservative:	Sodium azide
Precaution of Use:	This product contains Sodium azide: a POISONOUS AND HAZARDOUS SUBSTANCE which should be handled by trained staff only.
Storage:	4 °C,-20 °C
Storage Comment:	GTPBP10 Antibody (C-term) can be refrigerated at 2-8 °C for up to 6 months. For long term storage, place the at -20 °C.
Expiry Date:	6 months



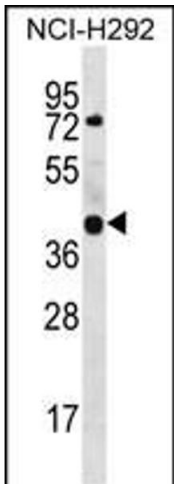
#### Western Blotting

**Image 1.** GTPBP10 Antibody (C-term) (ABIN656643 and ABIN2845886) western blot analysis in mouse kidney tissue lysates (35 µg/lane). This demonstrates the GTPBP10 antibody detected the GTPBP10 protein (arrow).



#### Western Blotting

**Image 2.** Anti-GTPBP10 Antibody (C-term) at 1:1000 dilution + A549 whole cell lysate Lysates/proteins at 20 µg per lane. Secondary Goat Anti-Rabbit IgG, (H+L), Peroxidase conjugated at 1/10000 dilution. Predicted band size : 43 kDa Blocking/Dilution buffer: 5 % NFDM/TBST.



#### Western Blotting

**Image 3.** GTPBP10 Antibody (C-term) (ABIN656643 and ABIN2845886) western blot analysis in NCI- cell line lysates (35 µg/lane). This demonstrates the GTPBP10 antibody detected the GTPBP10 protein (arrow).