

Datasheet for ABIN656644  
**anti-CLEC18A antibody (C-Term)**[Go to Product page](#)

## 3 Images

## Overview

Quantity:	400 µL
Target:	CLEC18A
Binding Specificity:	AA 338-367, C-Term
Reactivity:	Human
Host:	Rabbit
Clonality:	Polyclonal
Conjugate:	This CLEC18A antibody is un-conjugated
Application:	Western Blotting (WB), Immunohistochemistry (Paraffin-embedded Sections) (IHC (p))

## Product Details

Immunogen:	This CLEC18A antibody is generated from rabbits immunized with a KLH conjugated synthetic peptide between 338-367 amino acids from the C-terminal region of human CLEC18A.
Clone:	RB32312
Isotype:	Ig Fraction
Purification:	This antibody is purified through a protein A column, followed by peptide affinity purification.

## Target Details

Target:	CLEC18A
Alternative Name:	CLEC18A ( <a href="#">CLEC18A Products</a> )
Background:	The function of this protein remains unknown.

## Target Details

Molecular Weight:	49602
Gene ID:	348174
NCBI Accession:	<a href="#">NP_001129686</a> , <a href="#">NP_001258126</a> , <a href="#">NP_872425</a>
UniProt:	<a href="#">A5D8T8</a>

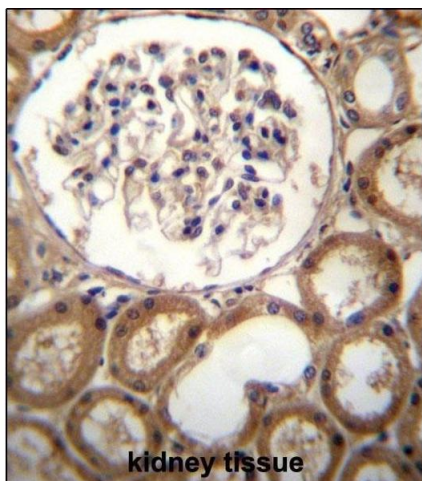
## Application Details

Application Notes:	WB: 1:1000. WB: 1:1000. IHC-P: 1:10~50
Restrictions:	For Research Use only

## Handling

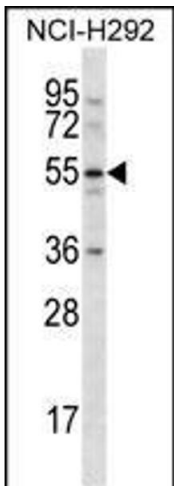
Format:	Liquid
Buffer:	Purified polyclonal antibody supplied in PBS with 0.09 % (W/V) sodium azide.
Preservative:	Sodium azide
Precaution of Use:	This product contains Sodium azide: a POISONOUS AND HAZARDOUS SUBSTANCE which should be handled by trained staff only.
Storage:	4 °C, -20 °C
Storage Comment:	CLEC18A Antibody (C-term) can be refrigerated at 2-8 °C for up to 6 months. For long term storage, place the at -20 °C.
Expiry Date:	6 months

## Images



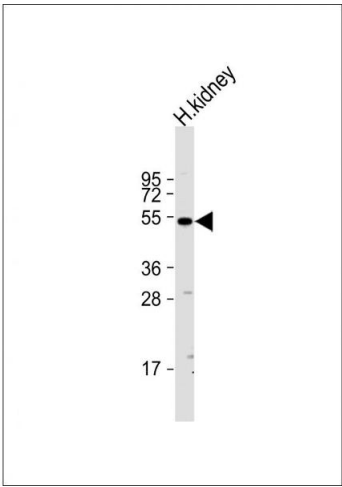
### Immunohistochemistry (Paraffin-embedded Sections)

**Image 1.** CLEC18A Antibody (C-term) (ABIN656644 and ABIN2845887) immunohistochemistry analysis in formalin fixed and paraffin embedded human kidney tissue followed by peroxidase conjugation of the secondary antibody and DAB staining. This data demonstrates the use of CLEC18A Antibody (C-term) for immunohistochemistry. Clinical relevance has not been evaluated.



#### Western Blotting

**Image 2.** CLEC18A Antibody (C-term) (ABIN656644 and ABIN2845887) western blot analysis in NCI- cell line lysates (35 µg/lane). This demonstrates the CLEC18A antibody detected the CLEC18A protein (arrow).



#### Western Blotting

**Image 3.** Anti-CLEC18A Antibody (C-term) at 1:1000 dilution + human kidney lysate Lysates/proteins at 20 µg per lane. Secondary Goat Anti-Rabbit IgG, (H+L), Peroxidase conjugated at 1/10000 dilution. Predicted band size : 50 kDa Blocking/Dilution buffer: 5 % NFDM/TBST.