



Datasheet for ABIN656646
anti-SLC23A1 antibody (N-Term)



[Go to Product page](#)

3 Images

1 Publication

Overview

| | |
|----------------------|--|
| Quantity: | 400 µL |
| Target: | SLC23A1 (SVCT1) |
| Binding Specificity: | AA 1-30, N-Term |
| Reactivity: | Human |
| Host: | Rabbit |
| Clonality: | Polyclonal |
| Conjugate: | This SLC23A1 antibody is un-conjugated |
| Application: | Western Blotting (WB), Immunohistochemistry (Paraffin-embedded Sections) (IHC (p)) |

Product Details

| | |
|---------------|---|
| Immunogen: | This SLC23A1 antibody is generated from rabbits immunized with a KLH conjugated synthetic peptide between 1-30 amino acids from the N-terminal region of human SLC23A1. |
| Clone: | RB32316 |
| Isotype: | Ig Fraction |
| Purification: | This antibody is purified through a protein A column, followed by peptide affinity purification. |

Target Details

| | |
|-------------------|---|
| Target: | SLC23A1 (SVCT1) |
| Alternative Name: | SLC23A1 (SVCT1 Products) |
| Background: | The absorption of vitamin C into the body and its distribution to organs requires two sodium- |

Target Details

dependent vitamin C transporters. This gene encodes one of the two transporters. The encoded protein is active in bulk vitamin C transport involving epithelial surfaces. Previously, this gene had an official symbol of SLC23A2. Alternatively spliced transcript variants encoding different isoforms have been found for this gene. [provided by RefSeq].

| | |
|-------------------|---|
| Molecular Weight: | 64831 |
| Gene ID: | 9963 |
| NCBI Accession: | NP_005838 , NP_689898 |
| UniProt: | Q9UHI7 |

Application Details

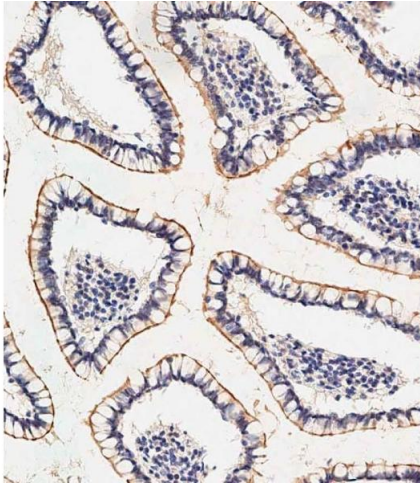
| | |
|--------------------|---|
| Application Notes: | WB: 1:1000. WB: 1:1000-1:2000. IHC-P-Leica: 1:500 |
| Restrictions: | For Research Use only |

Handling

| | |
|--------------------|---|
| Format: | Liquid |
| Buffer: | Purified polyclonal antibody supplied in PBS with 0.09 % (W/V) sodium azide. |
| Preservative: | Sodium azide |
| Precaution of Use: | This product contains Sodium azide: a POISONOUS AND HAZARDOUS SUBSTANCE which should be handled by trained staff only. |
| Storage: | 4 °C,-20 °C |
| Storage Comment: | SLC23A1 Antibody (N-term) can be refrigerated at 2-8 °C for up to 6 months. For long term storage, place the at -20 °C. |
| Expiry Date: | 6 months |

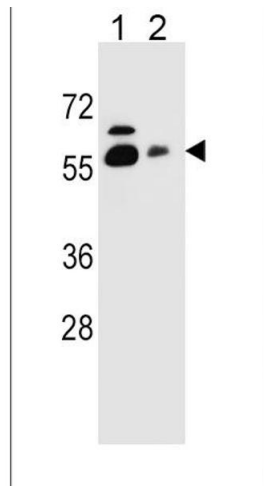
Publications

| | |
|-------------------|---|
| Product cited in: | Taylor, Khatua, Popik: "The innate immune factor apolipoprotein L1 restricts HIV-1 infection." in: Journal of virology , Vol. 88, Issue 1, pp. 592-603, (2013) (PubMed). |
|-------------------|---|



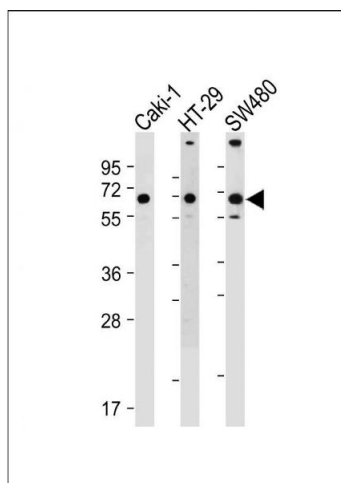
Immunohistochemistry (Paraffin-embedded Sections)

Image 1. Immunohistochemical analysis of paraffin-embedded human small intestine tissue using (ABIN656646 and ABIN2845888) performed on the Leica® BOND RXm. Tissue was fixed with formaldehyde at room temperature, antigen retrieval was by heat mediation with a EDTA buffer (pH 9.0). Samples were incubated with primary Antibody (1:500) for 1 hours at room temperature. A undiluted biotinylated CRF Anti-Polyvalent HRP Polymer antibody was used as the secondary antibody.



Western Blotting

Image 2. SLC23A1 Antibody (N-term) (ABIN656646 and ABIN2845888) western blot analysis in HepG2 (lane 1), NCI (lane 2) cell line lysates (35 µg/lane). This demonstrates the SLC23A1 antibody detected the SLC23A1 protein (arrow).



Western Blotting

Image 3. All lanes : Anti-SLC23A1 Antibody (N-term) at 1:1000-1:2000 dilution Lane 1: Caki-1 whole cell lysate Lane 2: HT-29 whole cell lysate Lane 3: S whole cell lysate Lysates/proteins at 20 µg per lane. Secondary Goat Anti-Rabbit IgG, (H+L), Peroxidase conjugated at 1/10000 dilution. Predicted band size : 65 kDa Blocking/Dilution buffer: 5 % NFDm/TBST.