



[Go to Product page](#)

Datasheet for ABIN656659  
**anti-BTBD16 antibody (N-Term)**

1 Image

Overview

Quantity:	400 µL
Target:	BTBD16
Binding Specificity:	AA 29-57, N-Term
Reactivity:	Human
Host:	Rabbit
Clonality:	Polyclonal
Conjugate:	This BTBD16 antibody is un-conjugated
Application:	Western Blotting (WB)

Product Details

Immunogen:	This BTBDG antibody is generated from rabbits immunized with a KLH conjugated synthetic peptide between 29-57 amino acids from the N-terminal region of human BTBDG.
Clone:	RB32384
Isotype:	Ig Fraction
Predicted Reactivity:	Pr
Purification:	This antibody is purified through a protein A column, followed by peptide affinity purification.

Target Details

Target:	BTBD16
Alternative Name:	BTBDG ( <a href="#">BTBD16 Products</a> )

## Target Details

---

Background: The function of this protein remains unknown.

Molecular Weight: 58481

Gene ID: 118663

NCBI Accession: [NP\\_653188](#)

UniProt: [Q32M84](#)

## Application Details

---

Application Notes: WB: 1:1000

Restrictions: For Research Use only

## Handling

---

Format: Liquid

Buffer: Purified polyclonal antibody supplied in PBS with 0.09 % (W/V) sodium azide.

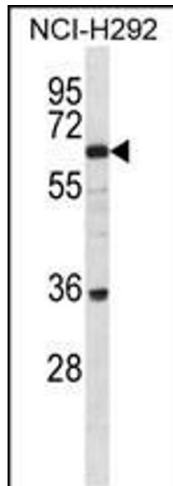
Preservative: Sodium azide

Precaution of Use: This product contains Sodium azide: a POISONOUS AND HAZARDOUS SUBSTANCE which should be handled by trained staff only.

Storage: 4 °C, -20 °C

Storage Comment: BTBDG Antibody (N-term) can be refrigerated at 2-8 °C for up to 6 months. For long term storage, place the at -20 °C.

Expiry Date: 6 months



#### Western Blotting

**Image 1.** BTBDG Antibody (N-term) (ABIN656659 and ABIN2845900) western blot analysis in NCI- cell line lysates (35 µg/lane). This demonstrates the BTBDG antibody detected the BTBDG protein (arrow).