

Datasheet for ABIN656662
anti-EXTL3 antibody (N-Term)[Go to Product page](#)

2 Images

Overview

Quantity:	400 µL
Target:	EXTL3
Binding Specificity:	AA 345-374, N-Term
Reactivity:	Human
Host:	Rabbit
Clonality:	Polyclonal
Conjugate:	This EXTL3 antibody is un-conjugated
Application:	Western Blotting (WB), Immunohistochemistry (Paraffin-embedded Sections) (IHC (p))

Product Details

Immunogen:	This EXTL3 antibody is generated from rabbits immunized with a KLH conjugated synthetic peptide between 345-374 amino acids from the N-terminal region of human EXTL3.
Clone:	RB32399
Isotype:	Ig Fraction
Predicted Reactivity:	M
Purification:	This antibody is purified through a protein A column, followed by peptide affinity purification.

Target Details

Target:	EXTL3
Alternative Name:	EXTL3 (EXTL3 Products)

Target Details

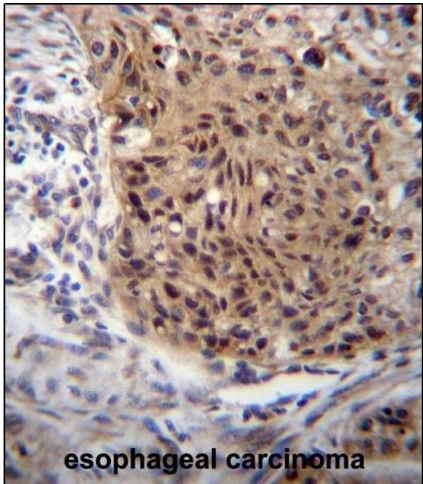
Background:	EXTL3 is probable glycosyltransferase (By similarity).
Molecular Weight:	104749
Gene ID:	2137
NCBI Accession:	NP_001431
UniProt:	O43909
Pathways:	Glycosaminoglycan Metabolic Process , ER-Nucleus Signaling

Application Details

Application Notes:	WB: 1:1000. IHC-P: 1:10~50
Restrictions:	For Research Use only

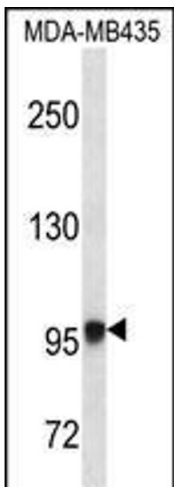
Handling

Format:	Liquid
Buffer:	Purified polyclonal antibody supplied in PBS with 0.09 % (W/V) sodium azide.
Preservative:	Sodium azide
Precaution of Use:	This product contains Sodium azide: a POISONOUS AND HAZARDOUS SUBSTANCE which should be handled by trained staff only.
Storage:	4 °C,-20 °C
Storage Comment:	EXTL3 Antibody (N-term) can be refrigerated at 2-8 °C for up to 6 months. For long term storage, place the at -20 °C.
Expiry Date:	6 months



Immunohistochemistry (Paraffin-embedded Sections)

Image 1. EXTL3 Antibody (N-term) (ABIN656662 and ABIN2845903) immunohistochemistry analysis in formalin fixed and paraffin embedded human esophageal carcinoma followed by peroxidase conjugation of the secondary antibody and DAB staining. This data demonstrates the use of EXTL3 Antibody (N-term) for immunohistochemistry. Clinical relevance has not been evaluated.



Western Blotting

Image 2. EXTL3 Antibody (N-term) (ABIN656662 and ABIN2845903) western blot analysis in MDA-M cell line lysates (35 µg/lane). This demonstrates the EXTL3 antibody detected the EXTL3 protein (arrow).