

Datasheet for ABIN656663
anti-KRT12 antibody (C-Term)

6 Images

2 Publications

[Go to Product page](#)

Overview

Quantity:	400 µL
Target:	KRT12
Binding Specificity:	AA 442-471, C-Term
Reactivity:	Human, Mouse, Rat
Host:	Rabbit
Clonality:	Polyclonal
Conjugate:	This KRT12 antibody is un-conjugated
Application:	Western Blotting (WB), Flow Cytometry (FACS), Immunohistochemistry (Paraffin-embedded Sections) (IHC (p))

Product Details

Immunogen:	This KRT12 antibody is generated from rabbits immunized with a KLH conjugated synthetic peptide between 442-471 amino acids from the C-terminal region of human KRT12.
Clone:	RB32401
Isotype:	Ig Fraction
Purification:	This antibody is purified through a protein A column, followed by peptide affinity purification.

Target Details

Target:	KRT12
Alternative Name:	KRT12 (KRT12 Products)

Target Details

Background:	KRT12 encodes the type I intermediate filament chain keratin 12, expressed in corneal epithelia. Mutations in this gene lead to Meesmann corneal dystrophy.
Molecular Weight:	53511
Gene ID:	3859
NCBI Accession:	NP_000214
UniProt:	Q99456

Application Details

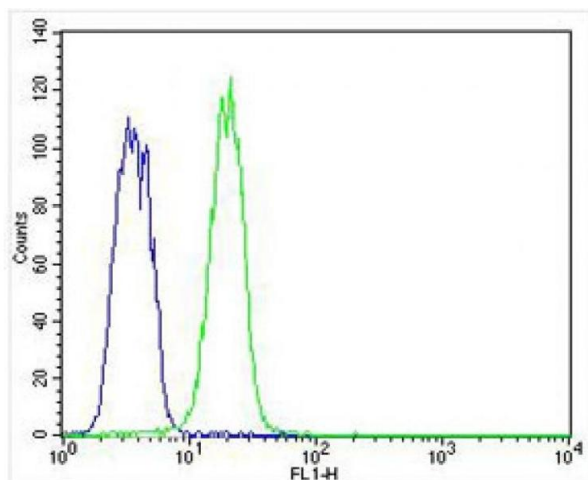
Application Notes:	WB: 1:1000. WB: 1:2000. WB: 1:2000. WB: 1:500. IHC-P: 1:10~50. FC: 1:25
Restrictions:	For Research Use only

Handling

Format:	Liquid
Buffer:	Purified polyclonal antibody supplied in PBS with 0.09 % (W/V) sodium azide.
Preservative:	Sodium azide
Precaution of Use:	This product contains Sodium azide: a POISONOUS AND HAZARDOUS SUBSTANCE which should be handled by trained staff only.
Storage:	4 °C,-20 °C
Storage Comment:	KRT12 Antibody (C-term) can be refrigerated at 2-8 °C for up to 6 months. For long term storage, place the at -20 °C.
Expiry Date:	6 months

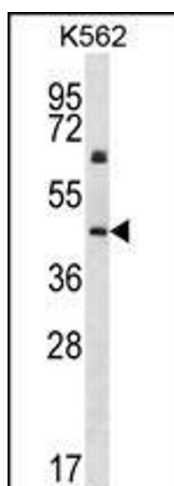
Publications

Product cited in:	Muntané, Horvath, Hof, Ely, Hopkins, Raghanti, Lewandowski, Wray, Sherwood: "Analysis of synaptic gene expression in the neocortex of primates reveals evolutionary changes in glutamatergic neurotransmission." in: Cerebral cortex (New York, N.Y. : 1991) , Vol. 25, Issue 6, pp. 1596-607, (2015) (PubMed).
-------------------	--



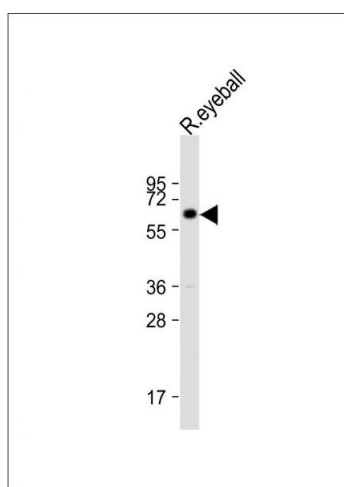
Flow Cytometry

Image 1. Overlay histogram showing K562 cells stained with (ABIN656663 and ABIN2845904) (green line). The cells were fixed with 4 % paraformaldehyde (10 min) and then permeabilized with 90 % methanol for 10 min. The cells were then incubated in 2 % bovine serum albumin to block non-specific protein-protein interactions followed by the antibody ((ABIN656663 and ABIN2845904), 1:25 dilution) for 60 min at 37 °C. The secondary antibody used was Alexa Fluor® 488 goat anti-rabbit IgG (H+L) (1583138) at 1/400 dilution for 40 min at 37 °C. Isotype control antibody (blue line) was rabbit IgG1 (1 µg/1x10⁶ cells) used under the same conditions. Acquisition of >10, 000 events was performed.



Western Blotting

Image 2. KRT12 Antibody (C-term) (ABIN656663 and ABIN2845904) western blot analysis in K562 cell line lysates (35 µg/lane). This demonstrates the KRT12 antibody detected the KRT12 protein (arrow).



Western Blotting

Image 3. Anti-KRT12 Antibody (C-term) at 1:2000 dilution + rat eyeball lysate Lysates/proteins at 20 µg per lane. Secondary Goat Anti-Rabbit IgG, (H+L), Peroxidase conjugated at 1/10000 dilution. Predicted band size : 54 kDa Blocking/Dilution buffer: 5 % NFDm/TBST.

Please check the [product details page](#) for more images. Overall 6 images are available for ABIN656663.