



[Go to Product page](#)

Datasheet for ABIN656664

anti-SGPL1 antibody (N-Term)

2 Images

Overview

Quantity:	400 µL
Target:	SGPL1
Binding Specificity:	AA 72-101, N-Term
Reactivity:	Human
Host:	Rabbit
Clonality:	Polyclonal
Conjugate:	This SGPL1 antibody is un-conjugated
Application:	Western Blotting (WB), Immunohistochemistry (Paraffin-embedded Sections) (IHC (p))

Product Details

Immunogen:	This SGPL1 antibody is generated from rabbits immunized with a KLH conjugated synthetic peptide between 72-101 amino acids from the N-terminal region of human SGPL1.
Clone:	RB32402
Isotype:	Ig Fraction
Purification:	This antibody is purified through a protein A column, followed by peptide affinity purification.

Target Details

Target:	SGPL1
Alternative Name:	SGPL1 (SGPL1 Products)
Background:	SGPL1 cleaves phosphorylated sphingoid bases (PSBs), such as sphingosine-1-phosphate, into

Target Details

fatty aldehydes and phosphoethanolamine. Elevates stress-induced ceramide production and apoptosis.

Molecular Weight: 63524

Gene ID: 8879

NCBI Accession: [NP_003892](#)

UniProt: [O95470](#)

Pathways: [Platelet-derived growth Factor Receptor Signaling](#)

Application Details

Application Notes: WB: 1:1000. IHC-P: 1:10~50

Restrictions: For Research Use only

Handling

Format: Liquid

Buffer: Purified polyclonal antibody supplied in PBS with 0.09 % (W/V) sodium azide.

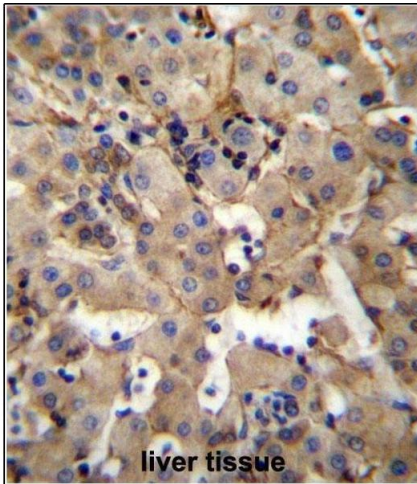
Preservative: Sodium azide

Precaution of Use: This product contains Sodium azide: a POISONOUS AND HAZARDOUS SUBSTANCE which should be handled by trained staff only.

Storage: 4 °C, -20 °C

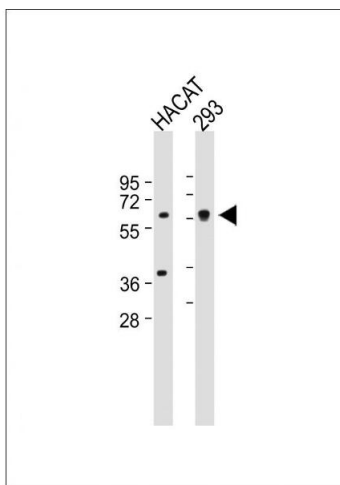
Storage Comment: SGPL1 Antibody (N-term) can be refrigerated at 2-8 °C for up to 6 months. For long term storage, place the at -20 °C.

Expiry Date: 6 months



Immunohistochemistry (Paraffin-embedded Sections)

Image 1. SGPL1 Antibody (N-term) (ABIN656664 and ABIN2845905) immunohistochemistry analysis in formalin fixed and paraffin embedded human liver tissue followed by peroxidase conjugation of the secondary antibody and DAB staining. This data demonstrates the use of SGPL1 Antibody (N-term) for immunohistochemistry. Clinical relevance has not been evaluated.



Western Blotting

Image 2. All lanes : Anti-SGPL1 Antibody (N-term) at 1:1000 dilution Lane 1: HACAT whole cell lysate Lane 2: 293 whole cell lysate Lysates/proteins at 20 µg per lane. Secondary Goat Anti-Rabbit IgG, (H+L), Peroxidase conjugated at 1/10000 dilution. Predicted band size : 64 kDa Blocking/Dilution buffer: 5 % NFDN/TBST.