

Datasheet for ABIN656666
anti-GPSM1 antibody (AA 439-468)

2 Images

[Go to Product page](#)

Overview

Quantity:	400 µL
Target:	GPSM1
Binding Specificity:	AA 439-468
Reactivity:	Human
Host:	Rabbit
Clonality:	Polyclonal
Conjugate:	This GPSM1 antibody is un-conjugated
Application:	Western Blotting (WB), Immunohistochemistry (Paraffin-embedded Sections) (IHC (p))

Product Details

Immunogen:	This GPSM1 antibody is generated from rabbits immunized with a KLH conjugated synthetic peptide between 439-468 amino acids from the Central region of human GPSM1.
Clone:	RB32410
Isotype:	Ig Fraction
Purification:	This antibody is purified through a protein A column, followed by peptide affinity purification.

Target Details

Target:	GPSM1
Alternative Name:	GPSM1 (GPSM1 Products)
Background:	G proteins propagate intracellular signals initiated by G protein-coupled receptors. GPSM1, a

Target Details

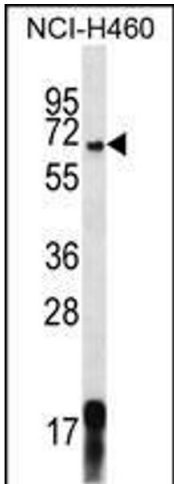
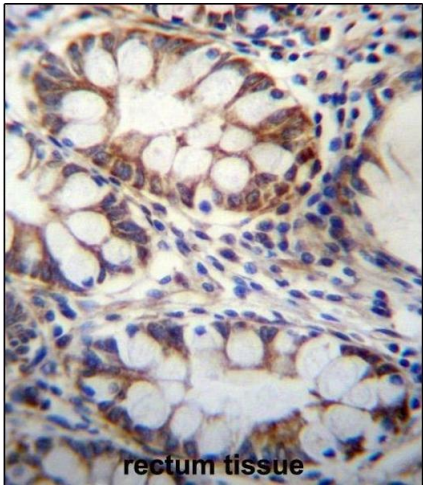
	receptor-independent activator of G protein signaling, is one of several factors that influence the basal activity of G protein signaling systems (Pizzinat et al., 2001 [PubMed 11278352]).
Molecular Weight:	74510
Gene ID:	26086
NCBI Accession:	NP_001139110 , NP_001139111 , NP_001186932 , NP_056412
UniProt:	Q86YR5
Pathways:	Regulation of G-Protein Coupled Receptor Protein Signaling

Application Details

Application Notes:	WB: 1:1000. IHC-P: 1:10~50
Restrictions:	For Research Use only

Handling

Format:	Liquid
Buffer:	Purified polyclonal antibody supplied in PBS with 0.09 % (W/V) sodium azide.
Preservative:	Sodium azide
Precaution of Use:	This product contains Sodium azide: a POISONOUS AND HAZARDOUS SUBSTANCE which should be handled by trained staff only.
Storage:	4 °C, -20 °C
Storage Comment:	GPSM1 Antibody (Center) can be refrigerated at 2-8 °C for up to 6 months. For long term storage, place the at -20 °C.
Expiry Date:	6 months



Immunohistochemistry (Paraffin-embedded Sections)

Image 1. GPSM1 Antibody (Center) (ABIN656666 and ABIN2845906) immunohistochemistry analysis in formalin fixed and paraffin embedded human rectum tissue followed by peroxidase conjugation of the secondary antibody and DAB staining. This data demonstrates the use of GPSM1 Antibody (Center) for immunohistochemistry. Clinical relevance has not been evaluated.

Western Blotting

Image 2. GPSM1 Antibody (Center) (ABIN656666 and ABIN2845906) western blot analysis in NCI- cell line lysates (35 µg/lane). This demonstrates the GPSM1 antibody detected the GPSM1 protein (arrow).