

Datasheet for ABIN656668
anti-Six5 antibody (AA 257-286)[Go to Product page](#)

3 Images

Overview

Quantity:	400 µL
Target:	Six5 (SIX5)
Binding Specificity:	AA 257-286
Reactivity:	Human
Host:	Rabbit
Clonality:	Polyclonal
Conjugate:	This Six5 antibody is un-conjugated
Application:	Western Blotting (WB), Immunofluorescence (IF), Immunohistochemistry (Paraffin-embedded Sections) (IHC (p))

Product Details

Immunogen:	This SIX5 antibody is generated from rabbits immunized with a KLH conjugated synthetic peptide between 257-286 amino acids from the Central region of human SIX5.
Clone:	RB32413
Isotype:	Ig Fraction
Predicted Reactivity:	M
Purification:	This antibody is purified through a protein A column, followed by peptide affinity purification.

Target Details

Target:	Six5 (SIX5)
---------	-------------

Target Details

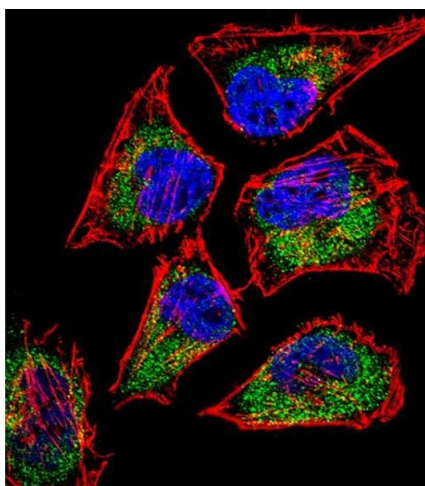
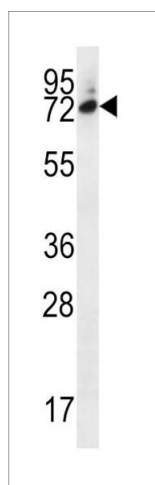
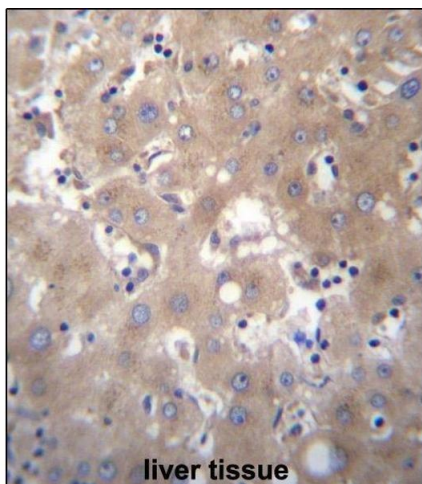
Alternative Name:	SIX5 (SIX5 Products)
Background:	The protein encoded by this gene is a homeodomain-containing transcription factor that appears to function in the regulation of organogenesis. This gene is located downstream of the dystrophin myotonic-protein kinase gene. Mutations in this gene are a cause of branchiootorenal syndrome type 2.
Molecular Weight:	74562
Gene ID:	147912
NCBI Accession:	NP_787071
UniProt:	Q8N196

Application Details

Application Notes:	IF: 1:10~50. WB: 1:1000. IHC-P: 1:10~50
Restrictions:	For Research Use only

Handling

Format:	Liquid
Buffer:	Purified polyclonal antibody supplied in PBS with 0.09 % (W/V) sodium azide.
Preservative:	Sodium azide
Precaution of Use:	This product contains Sodium azide: a POISONOUS AND HAZARDOUS SUBSTANCE which should be handled by trained staff only.
Storage:	4 °C,-20 °C
Storage Comment:	SIX5 Antibody (Center) can be refrigerated at 2-8 °C for up to 6 months. For long term storage, place the at -20 °C.
Expiry Date:	6 months



Immunohistochemistry (Paraffin-embedded Sections)

Image 1. SIX5 Antibody (Center) (ABIN656668 and ABIN2845908) immunohistochemistry analysis in formalin fixed and paraffin embedded human liver tissue followed by peroxidase conjugation of the secondary antibody and DAB staining. This data demonstrates the use of SIX5 Antibody (Center) for immunohistochemistry. Clinical relevance has not been evaluated.

Western Blotting

Image 2. SIX5 Antibody (Center) (ABIN656668 and ABIN2845908) western blot analysis in MDA-M cell line lysates (35 µg/lane). This demonstrates the SIX5 antibody detected the SIX5 protein (arrow).

Immunofluorescence

Image 3. Fluorescent confocal image of HeLa cell stained with SIX5 Antibody (Center) (ABIN656668 and ABIN2845908). HeLa cells were fixed with 4 % PFA (20 min), permeabilized with Triton X-100 (0.1 %, 10 min), then incubated with SIX5 primary antibody (1:25, 1 h at 37 °C). For secondary antibody, Alexa Fluor® 488 conjugated donkey anti-rabbit antibody (green) was used (1:400, 50 min at 37 °C). Cytoplasmic actin was counterstained with Alexa Fluor® 555 (red) conjugated Phalloidin (7 units/mL, 1 h at 37 °C). Nuclei were counterstained with DAPI (blue) (10 µg/mL, 10 min). SIX5 immunoreactivity is localized to Cytoplasm significantly.