

Datasheet for ABIN656669
anti-RPP38 antibody (C-Term)[Go to Product page](#)

1 Image

Overview

Quantity:	400 µL
Target:	RPP38
Binding Specificity:	AA 248-277, C-Term
Reactivity:	Human
Host:	Rabbit
Clonality:	Polyclonal
Application:	Western Blotting (WB)

Product Details

Immunogen:	This RPP38 antibody is generated from rabbits immunized with a KLH conjugated synthetic peptide between 248-277 amino acids from the C-terminal region of human RPP38.
Clone:	RB32415
Isotype:	Ig Fraction
Predicted Reactivity:	B
Purification:	This antibody is purified through a protein A column, followed by peptide affinity purification.

Target Details

Target:	RPP38
Alternative Name:	RPP38 (RPP38 Products)
Background:	Component of ribonuclease P, a protein complex that generates mature tRNA molecules by

Target Details

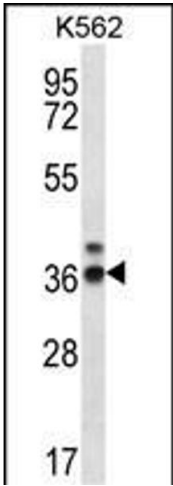
	cleaving their 5'-ends. RPP38 may associate transiently with RNase P RNA as a factor involved in the transport of H1 RNA to the putative site of its assembly in the cell, the nucleolus.
Molecular Weight:	31834
Gene ID:	10557
NCBI Accession:	NP_001091059 , NP_001252530 , NP_006405 , NP_892117
UniProt:	P78345

Application Details

Application Notes:	WB: 1:1000
Restrictions:	For Research Use only

Handling

Format:	Liquid
Buffer:	Purified polyclonal antibody supplied in PBS with 0.09 % (W/V) sodium azide.
Preservative:	Sodium azide
Precaution of Use:	This product contains Sodium azide: a POISONOUS AND HAZARDOUS SUBSTANCE which should be handled by trained staff only.
Storage:	4 °C,-20 °C
Storage Comment:	RPP38 Antibody (C-term) can be refrigerated at 2-8 °C for up to 6 months. For long term storage, place the at -20 °C.
Expiry Date:	6 months



Western Blotting

Image 1. R Antibody (C-term) (ABIN656669 and ABIN2845909) western blot analysis in K562 cell line lysates (35 µg/lane). This demonstrates the R antibody detected the R protein (arrow).