



[Go to Product page](#)

Datasheet for ABIN656672
anti-SYPL1 antibody (N-Term)

2 Images

Overview

Quantity:	400 µL
Target:	SYPL1
Binding Specificity:	AA 11-40, N-Term
Reactivity:	Human
Host:	Rabbit
Clonality:	Polyclonal
Conjugate:	This SYPL1 antibody is un-conjugated
Application:	Western Blotting (WB), Immunohistochemistry (Paraffin-embedded Sections) (IHC (p))

Product Details

Immunogen:	This SYPL1 antibody is generated from rabbits immunized with a KLH conjugated synthetic peptide between 11-40 amino acids from the N-terminal region of human SYPL1.
Clone:	RB32422
Isotype:	Ig Fraction
Purification:	This antibody is purified through a protein A column, followed by peptide affinity purification.

Target Details

Target:	SYPL1
Alternative Name:	SYPL1 (SYPL1 Products)
Background:	The function of this protein remains unknown.

Target Details

Molecular Weight:	28565
Gene ID:	6856
NCBI Accession:	NP_006745 , NP_874384
UniProt:	Q16563

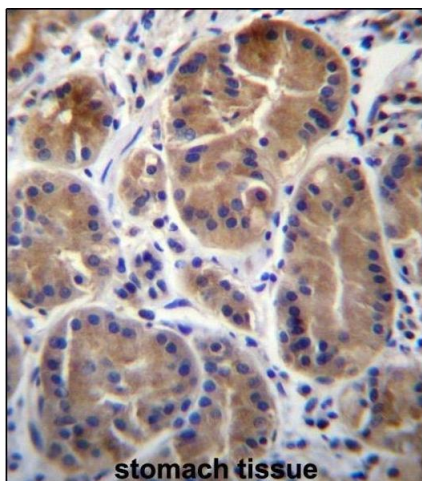
Application Details

Application Notes:	WB: 1:1000. IHC-P: 1:10~50
Restrictions:	For Research Use only

Handling

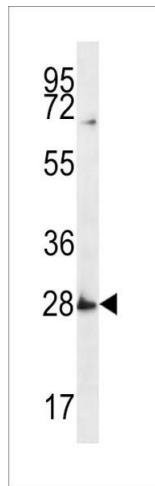
Format:	Liquid
Buffer:	Purified polyclonal antibody supplied in PBS with 0.09 % (W/V) sodium azide.
Preservative:	Sodium azide
Precaution of Use:	This product contains Sodium azide: a POISONOUS AND HAZARDOUS SUBSTANCE which should be handled by trained staff only.
Storage:	4 °C, -20 °C
Storage Comment:	SYPL1 Antibody (N-term) can be refrigerated at 2-8 °C for up to 6 months. For long term storage, place the at -20 °C.
Expiry Date:	6 months

Images



Immunohistochemistry (Paraffin-embedded Sections)

Image 1. SYPL1 Antibody (N-term) (ABIN656672 and ABIN2845911) immunohistochemistry analysis in formalin fixed and paraffin embedded human stomach tissue followed by peroxidase conjugation of the secondary antibody and DAB staining. This data demonstrates the use of SYPL1 Antibody (N-term) for immunohistochemistry. Clinical relevance has not been evaluated.



Western Blotting

Image 2. SYPL1 Antibody (N-term) (ABIN656672 and ABIN2845911) western blot analysis in MDA-M cell line lysates (35 µg/lane). This demonstrates the SYPL1 antibody detected the SYPL1 protein (arrow).