

Datasheet for ABIN6566734

anti-GEN1 antibody[Go to Product page](#)**1** Image

Overview

Quantity:	200 µL
Target:	GEN1
Reactivity:	Human, Mouse
Host:	Rabbit
Clonality:	Polyclonal
Conjugate:	This GEN1 antibody is un-conjugated
Application:	Western Blotting (WB)

Product Details

Immunogen:	Recombinant protein of human GEN1
Isotype:	IgG
Purification:	Affinity purification

Target Details

Target:	GEN1
Alternative Name:	GEN1 (GEN1 Products)
Background:	<p>Synonyms: DKFZp781F0986, Flap endonuclease GEN homolog 1, FLJ40869, GEN 1, Gen, Gen homolog 1 endonuclease (Drosophila), Gen homolog 1 endonuclease, GEN, GEN1</p> <p>Background: This gene encodes a member of the Rad2/xeroderma pigmentosum group G nuclease family, whose members are characterized by N-terminal and internal xeroderma pigmentosum group G nuclease domains followed by helix-hairpin-helix domains and</p>

Target Details

disordered C-terminal domains. The protein encoded by this gene is involved in resolution of Holliday junctions, which are intermediate four-way structures that covalently link DNA during homologous recombination and double-strand break repair. The protein resolves Holliday junctions by creating dual incisions across the junction to produce nicked duplex products that can be ligated. In addition, this protein has been found to localize to centrosomes where it has been implicated in regulation of centrosome integrity. Alternative splicing results in multiple transcript variants.

Molecular Weight: Observed_MW: 103kDa
 Calculated_MW: 102kDa

Gene ID: 348654

UniProt: [Q17RS7](#)

Pathways: [DNA Damage Repair](#)

Application Details

Application Notes: WB 1:500 - 1:2000

Restrictions: For Research Use only

Handling

Concentration: 1 mg/mL

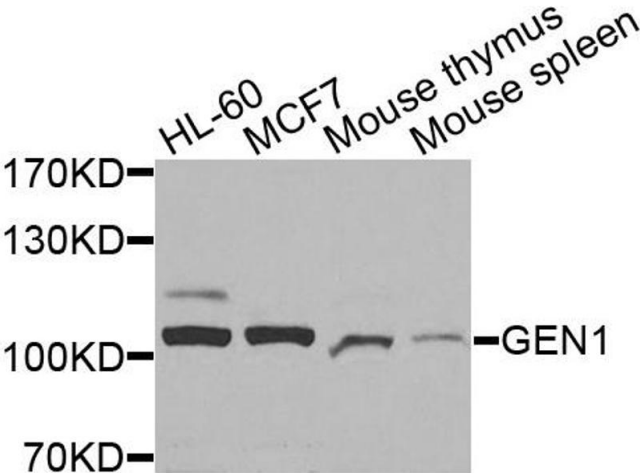
Buffer: Buffer: PBS with 0.02 % sodium azide, 50 % glycerol, pH 7.3.

Preservative: Sodium azide

Precaution of Use: This product contains Sodium azide: a POISONOUS AND HAZARDOUS SUBSTANCE which should be handled by trained staff only.

Storage: -20 °C

Storage Comment: Store at -20°C. Avoid freeze / thaw cycles.



Western Blotting

Image 1. Western blot analysis of extracts of various cell lines, using GEN1 antibody.