



[Go to Product page](#)

Datasheet for ABIN6566738
anti-MRPL32 antibody

1 Image

Overview

Quantity:	200 µL
Target:	MRPL32
Reactivity:	Human, Mouse
Host:	Rabbit
Clonality:	Polyclonal
Conjugate:	This MRPL32 antibody is un-conjugated
Application:	Western Blotting (WB)

Product Details

Immunogen:	Recombinant protein of human MRPL32
Isotype:	IgG
Purification:	Affinity purification

Target Details

Target:	MRPL32
Alternative Name:	MRPL32 (MRPL32 Products)
Background:	Synonyms: 39S ribosomal protein L32,39S ribosomal protein L32 mitochondrial,bMRP 59b,HSPC283,L32mt,mitochondrial,Mitochondrial ribosomal protein L32,MRP-L32,mRpL32,RM32 Background: Mammalian mitochondrial ribosomal proteins are encoded by nuclear genes and help in protein synthesis within the mitochondrion. Mitochondrial ribosomes (mitoribosomes)

Target Details

consist of a small 28S subunit and a large 39S subunit. They have an estimated 75 % protein to rRNA composition compared to prokaryotic ribosomes, where this ratio is reversed. Another difference between mammalian mitoribosomes and prokaryotic ribosomes is that the latter contain a 5S rRNA. Among different species, the proteins comprising the mitoribosome differ greatly in sequence, and sometimes in biochemical properties, which prevents easy recognition by sequence homology. This gene encodes a 39S subunit protein that belongs to the L32 ribosomal protein family. A pseudogene corresponding to this gene is found on chromosome Xp.

Molecular Weight: Observed_MW: 14kDa
Calculated_MW: 21kDa

Gene ID: 64983

UniProt: [Q9BYC8](#)

Application Details

Application Notes: WB 1:500 - 1:2000

Restrictions: For Research Use only

Handling

Concentration: 1 mg/mL

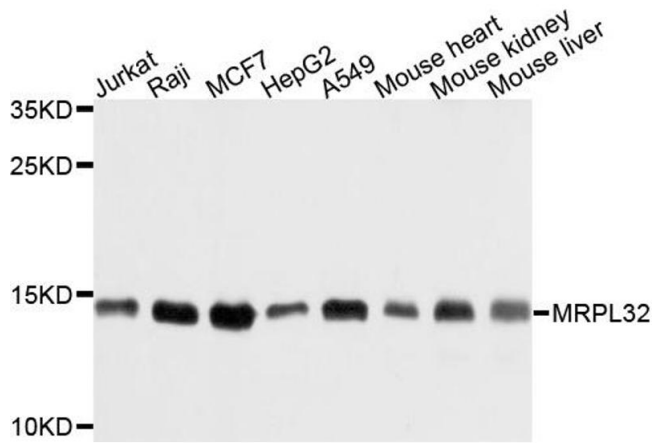
Buffer: Buffer: PBS with 0.02 % sodium azide, 50 % glycerol, pH 7.3.

Preservative: Sodium azide

Precaution of Use: This product contains Sodium azide: a POISONOUS AND HAZARDOUS SUBSTANCE which should be handled by trained staff only.

Storage: -20 °C

Storage Comment: Store at -20°C. Avoid freeze / thaw cycles.



Western Blotting

Image 1. Western blot analysis of extracts of various cell lines, using MRPL32 antibody.