

Datasheet for ABIN656685
anti-WHSC1L1 antibody (N-Term)[Go to Product page](#)

2 Images

Overview

Quantity:	400 µL
Target:	WHSC1L1
Binding Specificity:	AA 188-217, N-Term
Reactivity:	Human, Mouse
Host:	Rabbit
Clonality:	Polyclonal
Conjugate:	This WHSC1L1 antibody is un-conjugated
Application:	Western Blotting (WB)

Product Details

Immunogen:	This WHSC1L1 antibody is generated from rabbits immunized with a KLH conjugated synthetic peptide between 188-217 amino acids from the N-terminal region of human WHSC1L1.
Clone:	RB12677
Isotype:	Ig Fraction
Purification:	This antibody is prepared by Saturated Ammonium Sulfate (SAS) precipitation followed by dialysis against PBS.

Target Details

Target:	WHSC1L1
Alternative Name:	WHSC1L1 (WHSC1L1 Products)

Target Details

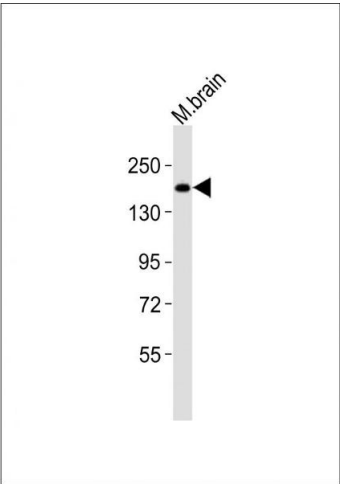
Background:	This gene is related to the Wolf-Hirschhorn syndrome candidate-1 gene and encodes a protein with PWWP (proline-tryptophan-tryptophan-proline) domains. The function of the protein has not been determined. Two alternatively spliced variants have been described.
Molecular Weight:	161613
Gene ID:	54904
NCBI Accession:	NP_060248 , NP_075447
UniProt:	Q9BZ95

Application Details

Application Notes:	WB: 1:1000. WB: 1:2000
Restrictions:	For Research Use only

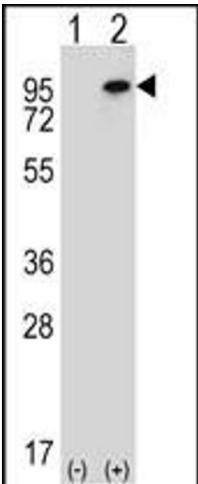
Handling

Format:	Liquid
Buffer:	Purified polyclonal antibody supplied in PBS with 0.09 % (W/V) sodium azide.
Preservative:	Sodium azide
Precaution of Use:	This product contains Sodium azide: a POISONOUS AND HAZARDOUS SUBSTANCE which should be handled by trained staff only.
Storage:	4 °C, -20 °C
Storage Comment:	WHSC1L1 Antibody (N-term) can be refrigerated at 2-8 °C for up to 6 months. For long term storage, place the at -20 °C.
Expiry Date:	6 months



Western Blotting

Image 1. Anti-WHSC1L1 Antibody (N-term) at 1:2000 dilution + mouse brain lysates Lysates/proteins at 20 µg per lane. Secondary Goat Anti-Rabbit IgG, (H+L), Peroxidase conjugated at 1/10000 dilution Predicted band size : 162 kDa Blocking/Dilution buffer: 5 % NFDm/TBST.



Western Blotting

Image 2. Western blot analysis of WHSC1L1 (arrow) using rabbit polyclonal WHSC1L1 Antibody (N-term) (ABIN656685 and ABIN2845923). 293 cell lysates (2 µg/lane) either nontransfected (Lane 1) or transiently transfected (Lane 2) with the WHSC1L1 gene.