



[Go to Product page](#)

Datasheet for ABIN6566856

anti-CYFIP1 antibody

1 Image

Overview

Quantity:	200 µL
Target:	CYFIP1
Reactivity:	Human, Mouse, Rat
Host:	Rabbit
Clonality:	Polyclonal
Conjugate:	This CYFIP1 antibody is un-conjugated
Application:	Western Blotting (WB)

Product Details

Immunogen:	Recombinant protein of human CYFIP1
Isotype:	IgG
Purification:	Affinity purification

Target Details

Target:	CYFIP1
Alternative Name:	CYFIP1 (CYFIP1 Products)
Background:	Synonyms: CY,CYFIP 1,CYFIP1,CYFP1,Cytoplasmic FMR1 interacting protein 1,Cytoplasmic FMR1-interacting protein 1,FLJ45151,KIAA0068,p140sra 1,p140sra-1,P140SRA1,Selective hybridizing clone,SHYC,Specifically Rac1 associated protein 1,Specifically Rac1-associated protein 1,SRA 1,Sra-1,SRA1
Molecular Weight:	Observed_MW: 140kDa

Target Details

Calculated_MW: 51kDa/94kDa/145kDa

Gene ID: 23191

UniProt: [Q7L576](#)

Application Details

Application Notes: WB 1:1000 - 1:2000

Restrictions: For Research Use only

Handling

Concentration: 1 mg/mL

Buffer: Buffer: PBS with 0.02 % sodium azide, 50 % glycerol, pH 7.3.

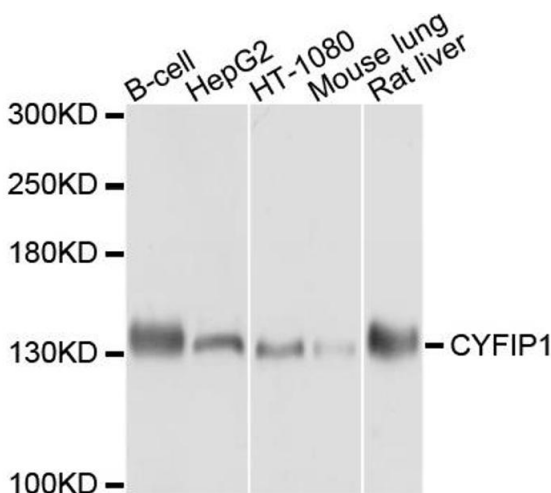
Preservative: Sodium azide

Precaution of Use: This product contains Sodium azide: a POISONOUS AND HAZARDOUS SUBSTANCE which should be handled by trained staff only.

Storage: -20 °C

Storage Comment: Store at -20°C. Avoid freeze / thaw cycles.

Images



Western Blotting

Image 1. Western blot analysis of extracts of various cell lines, using CYFIP1 antibody.