

Datasheet for ABIN656687
anti-CDCA8 antibody (N-Term)

3 Images

[Go to Product page](#)

Overview

| | |
|----------------------|---|
| Quantity: | 400 µL |
| Target: | CDCA8 |
| Binding Specificity: | AA 9-38, N-Term |
| Reactivity: | Human |
| Host: | Rabbit |
| Clonality: | Polyclonal |
| Conjugate: | This CDCA8 antibody is un-conjugated |
| Application: | Western Blotting (WB), Flow Cytometry (FACS), Immunohistochemistry (Paraffin-embedded Sections) (IHC (p)) |

Product Details

| | |
|---------------|---|
| Immunogen: | This CDCA8 antibody is generated from rabbits immunized with a KLH conjugated synthetic peptide between 9-38 amino acids from the N-terminal region of human CDCA8. |
| Clone: | RB16561 |
| Isotype: | Ig Fraction |
| Purification: | This antibody is prepared by Saturated Ammonium Sulfate (SAS) precipitation followed by dialysis against PBS. |

Target Details

| | |
|-------------------|--|
| Target: | CDCA8 |
| Alternative Name: | CDCA8 (CDCA8 Products) |

Target Details

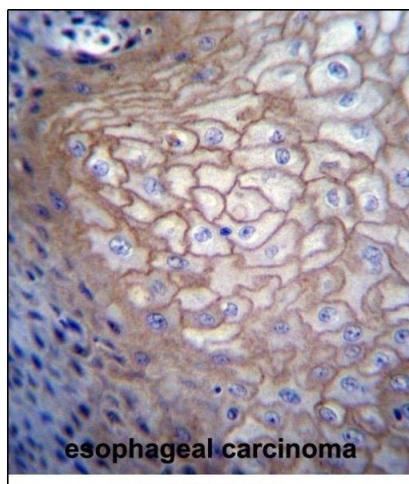
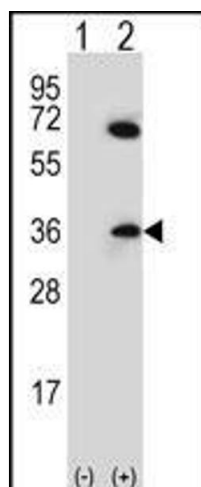
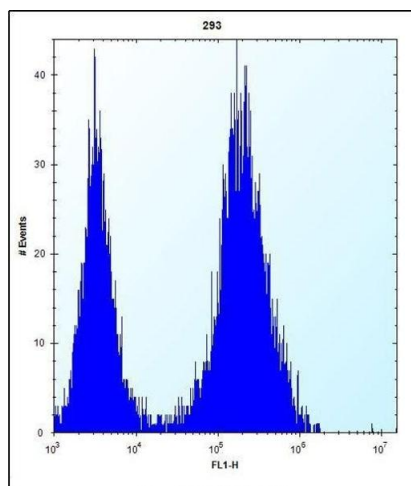
| | |
|-------------------|--|
| Background: | CDCA8 is a component of a chromosomal passenger complex required for stability of the bipolar mitotic spindle (Gassmann et al., 2004 [PubMed 15249581]). |
| Molecular Weight: | 31323 |
| Gene ID: | 55143 |
| NCBI Accession: | NP_001243804 , NP_060571 |
| UniProt: | Q53HL2 |
| Pathways: | Cell Division Cycle, M Phase |

Application Details

| | |
|--------------------|---|
| Application Notes: | WB: 1:1000. IHC-P: 1:10~50. FC: 1:10~50 |
| Restrictions: | For Research Use only |

Handling

| | |
|--------------------|--|
| Format: | Liquid |
| Buffer: | Purified polyclonal antibody supplied in PBS with 0.09 % (W/V) sodium azide. |
| Preservative: | Sodium azide |
| Precaution of Use: | This product contains Sodium azide: a POISONOUS AND HAZARDOUS SUBSTANCE which should be handled by trained staff only. |
| Storage: | 4 °C, -20 °C |
| Storage Comment: | CDCA8 Antibody (N-term) can be refrigerated at 2-8 °C for up to 6 months. For long term storage, place the at -20 °C. |
| Expiry Date: | 6 months |



Flow Cytometry

Image 1. CDCA8 Antibody (N-term) (ABIN656687 and ABIN2845924) flow cytometric analysis of 293 cells (right histogram) compared to a negative control cell (left histogram). FITC-conjugated goat-anti-rabbit secondary antibodies were used for the analysis.

Western Blotting

Image 2. Western blot analysis of CDCA8 (arrow) using rabbit polyclonal CDCA8 Antibody (N-term) (ABIN656687 and ABIN2845924). 293 cell lysates (2 µg/lane) either nontransfected (Lane 1) or transiently transfected (Lane 2) with the CDCA8 gene.

Immunohistochemistry (Paraffin-embedded Sections)

Image 3. CDCA8 Antibody (N-term) (ABIN656687 and ABIN2845924) immunohistochemistry analysis in formalin fixed and paraffin embedded human esophageal carcinoma followed by peroxidase conjugation of the secondary antibody and DAB staining. This data demonstrates the use of CDCA8 Antibody (N-term) for immunohistochemistry. Clinical relevance has not been evaluated.