

Datasheet for ABIN656688  
**anti-Elf4 antibody (N-Term)**[Go to Product page](#)

## 1 Image

## Overview

Quantity:	400 µL
Target:	Elf4
Binding Specificity:	AA 161-188, N-Term
Reactivity:	Human
Host:	Rabbit
Clonality:	Polyclonal
Conjugate:	This Elf4 antibody is un-conjugated
Application:	Western Blotting (WB)

## Product Details

Immunogen:	This ELF4 antibody is generated from rabbits immunized with a KLH conjugated synthetic peptide between 161-188 amino acids from the N-terminal region of human ELF4.
Clone:	RB17898
Isotype:	Ig Fraction
Purification:	This antibody is purified through a protein A column, followed by peptide affinity purification.

## Target Details

Target:	Elf4
Alternative Name:	ELF4 ( <a href="#">Elf4 Products</a> )
Background:	The protein encoded by this gene is a transcriptional activator that binds and activates the

## Target Details

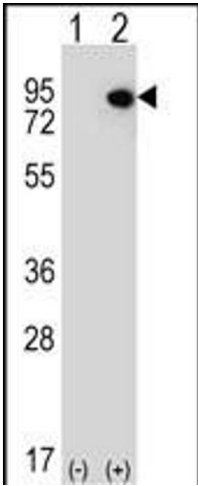
	promoters of the CSF2, IL3, IL8, and PRF1 genes. The encoded protein is involved in natural killer cell development and function, innate immunity, and induction of cell cycle arrest in naive CD8+ cells. Two transcript variants encoding the same protein have been found for this gene.
Molecular Weight:	70730
Gene ID:	2000
NCBI Accession:	<a href="#">NP_001120669</a> , <a href="#">NP_001412</a>
UniProt:	<a href="#">Q99607</a>
Pathways:	<a href="#">Positive Regulation of Endopeptidase Activity</a>

## Application Details

Application Notes:	WB: 1:1000
Restrictions:	For Research Use only

## Handling

Format:	Liquid
Buffer:	Purified polyclonal antibody supplied in PBS with 0.09 % (W/V) sodium azide.
Preservative:	Sodium azide
Precaution of Use:	This product contains Sodium azide: a POISONOUS AND HAZARDOUS SUBSTANCE which should be handled by trained staff only.
Storage:	4 °C,-20 °C
Storage Comment:	ELF4 Antibody (N-term) can be refrigerated at 2-8 °C for up to 6 months. For long term storage, place the at -20 °C.
Expiry Date:	6 months



Western Blotting

**Image 1.** Western blot analysis of ELF4 (arrow) using rabbit polyclonal ELF4 Antibody (N-term) (ABIN656688 and ABIN2845925). 293 cell lysates (2 µg/lane) either nontransfected (Lane 1) or transiently transfected (Lane 2) with the ELF4 gene.