



[Go to Product page](#)

Datasheet for ABIN6566925

## anti-Phospholipase B antibody

### 1 Image

#### Overview

Quantity:	200 µL
Target:	Phospholipase B (PLB)
Reactivity:	Human, Mouse, Rat
Host:	Rabbit
Clonality:	Polyclonal
Conjugate:	This Phospholipase B antibody is un-conjugated
Application:	Western Blotting (WB)

#### Product Details

Immunogen:	Recombinant protein of human PLB1
Isotype:	IgG
Purification:	Affinity purification

#### Target Details

Target:	Phospholipase B (PLB)
Alternative Name:	PLB1 ( <a href="#">PLB Products</a> )
Background:	Synonyms: Calcium dependent phospholipid binding protein,CPLA 2,cPLA2 alpha,cPLA2,Cytosolic phospholipase A2,Cytosolic phospholipase A2 group IVA,Lysophospholipase,MGC126350,PA24A,Phosphatidylcholine 2 acylhydrolase,Phosphatidylcholine 2-acylhydrolase,Phospholipase A2 group 4 A,Phospholipase A2 group IVA (cytosolic calcium dependent),Phospholipase A2 group

## Target Details

---

IVA,PhospholipaseA2,PLA2G4,pla2g4a

Background: This gene encodes a membrane-associated phospholipase that displays lysophospholipase and phospholipase A2 activities through removal of sn-1 and sn-2 fatty acids of glycerophospholipids. In addition, it displays lipase and retinyl ester hydrolase activities. The encoded protein is highly conserved and is composed of a large, glycosylated extracellular domain composed of four tandem homologous domains, followed by a hydrophobic segment that anchors the enzyme to the membrane and a short C-terminal cytoplasmic tail. This gene has been identified as a candidate rheumatoid arthritis risk gene.

---

Molecular Weight:	Observed_MW: 170kDa Calculated_MW: 47kDa/54kDa/85kDa/161kDa/163kDa
Gene ID:	151056
UniProt:	<a href="#">Q6P1J6</a>

---

## Application Details

---

---

Application Notes:	WB 1:500 - 1:2000
Restrictions:	For Research Use only

---

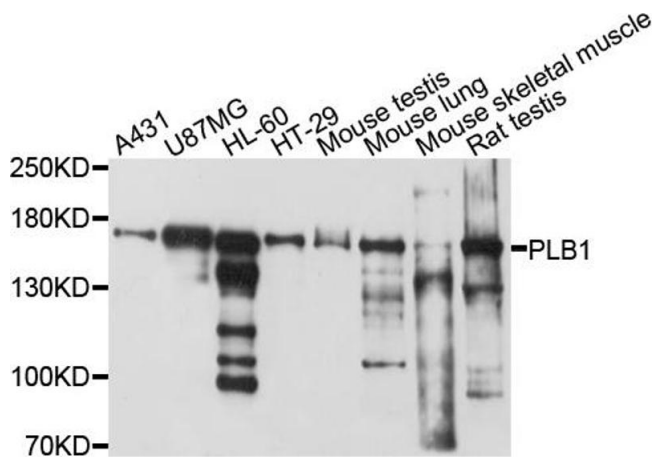
## Handling

---

---

Concentration:	1 mg/mL
Buffer:	Buffer: PBS with 0.02 % sodium azide, 50 % glycerol, pH 7.3.
Preservative:	Sodium azide
Precaution of Use:	This product contains Sodium azide: a POISONOUS AND HAZARDOUS SUBSTANCE which should be handled by trained staff only.
Storage:	-20 °C
Storage Comment:	Store at -20°C. Avoid freeze / thaw cycles.

---



### Western Blotting

**Image 1.** Western blot analysis of extracts of various cell lines, using PLB1 antibody.