

Datasheet for ABIN6566937

anti-FCRL3 antibody[Go to Product page](#)**1** Image

Overview

Quantity:	200 µL
Target:	FCRL3
Reactivity:	Human, Mouse, Rat
Host:	Rabbit
Clonality:	Polyclonal
Application:	Western Blotting (WB)

Product Details

Immunogen:	Recombinant protein of human FCRL3
Isotype:	IgG
Purification:	Affinity purification

Target Details

Target:	FCRL3
Alternative Name:	FCRL3 (FCRL3 Products)
Background:	<p>Synonyms: CD307c, Fc receptor homolog 3, Fc receptor-like protein 3, FcR-like protein 3, FcRH3, FcRL3, FCRL3, hIFGP3, IFGP family protein 3, IFGP3, Immune receptor translocation-associated protein 3, Immunoglobulin superfamily receptor translocation associated protein 3, IRTA3, SH2 domain-containing phosphatase anchor protein 2, SPAP2</p> <p>Background: This gene encodes a member of the immunoglobulin receptor superfamily and is one of several Fc receptor-like glycoproteins clustered on the long arm of chromosome 1. The</p>

Target Details

encoded protein contains immunoreceptor-tyrosine activation motifs and immunoreceptor-tyrosine inhibitory motifs in its cytoplasmic domain and may play a role in regulation of the immune system. Mutations in this gene have been associated with rheumatoid arthritis, autoimmune thyroid disease, and systemic lupus erythematosus. Alternative splicing results in multiple transcript variants.

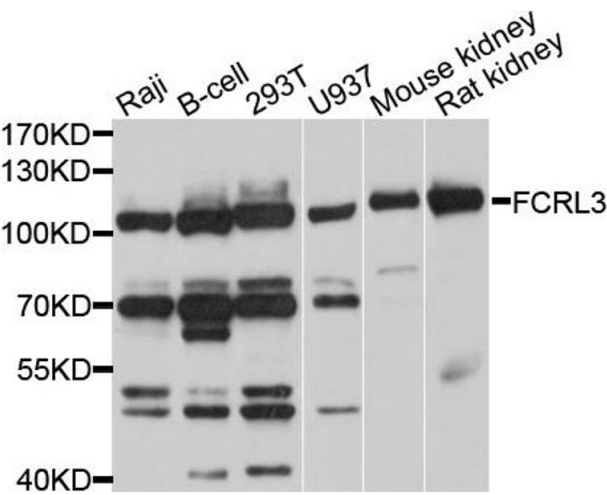
Molecular Weight:	Observed_MW: 105kDa Calculated_MW: 21kDa/22kDa/69kDa/77kDa/80kDa/81kDa
Gene ID:	115352
UniProt:	Q96P31

Application Details

Application Notes:	WB 1:500 - 1:2000
Restrictions:	For Research Use only

Handling

Concentration:	1 mg/mL
Buffer:	Buffer: PBS with 0.02 % sodium azide, 50 % glycerol, pH 7.3.
Preservative:	Sodium azide
Precaution of Use:	This product contains Sodium azide: a POISONOUS AND HAZARDOUS SUBSTANCE which should be handled by trained staff only.
Storage:	-20 °C
Storage Comment:	Store at -20°C. Avoid freeze / thaw cycles.



Western Blotting

Image 1. Western blot analysis of extracts of various cell lines, using FCRL3 antibody.