

Datasheet for ABIN656699  
**anti-RPL15 antibody (N-Term)**



[Go to Product page](#)

3 Images

## Overview

Quantity:	400 µL
Target:	RPL15
Binding Specificity:	AA 21-50, N-Term
Reactivity:	Human, Mouse
Host:	Rabbit
Clonality:	Polyclonal
Conjugate:	This RPL15 antibody is un-conjugated
Application:	Western Blotting (WB), Flow Cytometry (FACS), Immunohistochemistry (Paraffin-embedded Sections) (IHC (p))

## Product Details

Immunogen:	This RPL15 antibody is generated from rabbits immunized with a KLH conjugated synthetic peptide between 21-50 amino acids from the N-terminal region of human RPL15.
Clone:	RB27525
Isotype:	Ig Fraction
Predicted Reactivity:	B, Pr, Rat
Purification:	This antibody is purified through a protein A column, followed by peptide affinity purification.

## Target Details

Target:	RPL15
---------	-------

## Target Details

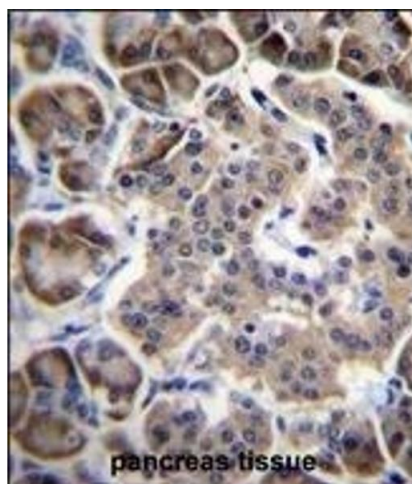
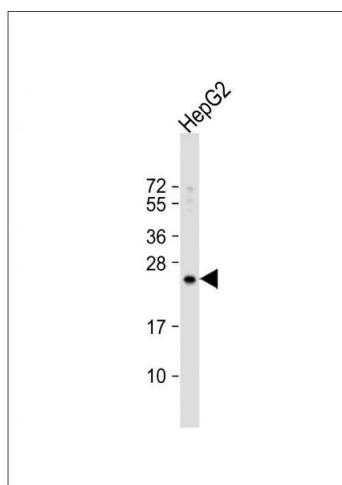
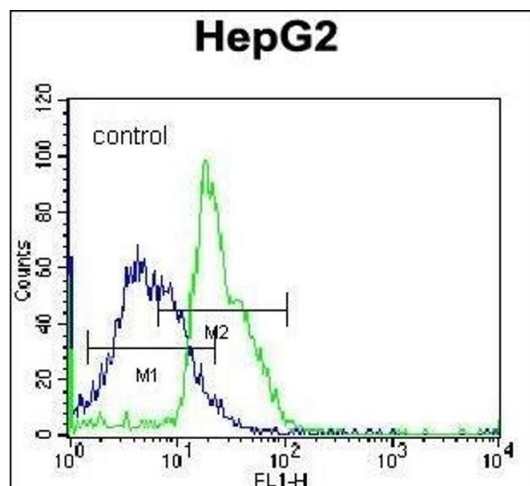
Alternative Name:	RPL15 ( <a href="#">RPL15 Products</a> )
Background:	Ribosomes, the organelles that catalyze protein synthesis, consist of a small 40S subunit and a large 60S subunit. Together these subunits are composed of 4 RNA species and approximately 80 structurally distinct proteins. This gene encodes a ribosomal protein that is a component of the 60S subunit. The protein belongs to the L15E family of ribosomal proteins. It is located in the cytoplasm. This gene shares sequence similarity with the yeast ribosomal protein YL10 gene. Although this gene has been referred to as RPL10, its official symbol is RPL15. This gene has been shown to be overexpressed in some esophageal tumors compared to normal matched tissues. Transcript variants utilizing alternative polyA signals exist. As is typical for genes encoding ribosomal proteins, there are multiple processed pseudogenes of this gene dispersed through the genome.
Molecular Weight:	24146
Gene ID:	6138
NCBI Accession:	<a href="#">NP_001240308</a> , <a href="#">NP_001240309</a> , <a href="#">NP_001240311</a> , <a href="#">NP_001240312</a> , <a href="#">NP_001240313</a> , <a href="#">NP_002939</a>
UniProt:	<a href="#">P61313</a>

## Application Details

Application Notes:	WB: 1:1000. IHC-P: 1:10~50. FC: 1:10~50
Restrictions:	For Research Use only

## Handling

Format:	Liquid
Buffer:	Purified polyclonal antibody supplied in PBS with 0.09 % (W/V) sodium azide.
Preservative:	Sodium azide
Precaution of Use:	This product contains Sodium azide: a POISONOUS AND HAZARDOUS SUBSTANCE which should be handled by trained staff only.
Storage:	4 °C,-20 °C
Storage Comment:	RPL15 Antibody (N-term) can be refrigerated at 2-8 °C for up to 6 months. For long term storage, place the at -20 °C.
Expiry Date:	6 months



### Flow Cytometry

**Image 1.** RPL15 Antibody (N-term) (ABIN656699 and ABIN2845932) flow cytometric analysis of K562 cells (right histogram) compared to a negative control cell (left histogram). FITC-conjugated donkey-anti-rabbit secondary antibodies were used for the analysis.

### Western Blotting

**Image 2.** Anti-RPL15 Antibody (N-term) at 1:1000 dilution + HepG2 whole cell lysate Lysates/proteins at 20 µg per lane. Secondary Goat Anti-Rabbit IgG, (H+L), Peroxidase conjugated at 1/10000 dilution. Predicted band size : 24 kDa. Blocking/Dilution buffer: 5 % NFDN/TBST.

### Immunohistochemistry (Paraffin-embedded Sections)

**Image 3.** RPL15 Antibody (N-term) (ABIN656699 and ABIN2845932) immunohistochemistry analysis in formalin fixed and paraffin embedded human pancreas tissue followed by peroxidase conjugation of the secondary antibody and DAB staining. This data demonstrates the use of RPL15 Antibody (N-term) for immunohistochemistry. Clinical relevance has not been evaluated.