

Datasheet for ABIN6566998

**anti-WDR11 antibody**[Go to Product page](#)**1** Image

## Overview

Quantity:	200 µL
Target:	WDR11
Reactivity:	Human, Mouse, Rat
Host:	Rabbit
Clonality:	Polyclonal
Application:	Western Blotting (WB)

## Product Details

Immunogen:	Recombinant protein of human WDR11
Isotype:	IgG
Purification:	Affinity purification

## Target Details

Target:	WDR11
Alternative Name:	WDR11 ( <a href="#">WDR11 Products</a> )
Background:	<p>Synonyms: Bromodomain and WD repeat containing protein 2,Bromodomain and WD repeat domain containing 2,Bromodomain- and WD repeat-containing protein 2, formerly,BRWD2,BRWD2, formerly,DKFZp434L1715,DR11,FLJ42531,HH14,KIAA1351,WD repeat containing protein 11,WD repeat containing protein 15,WD repeat domain 11,WD repeat domain 15,WDR 11,WDR15</p> <p>Background: This gene encodes a member of the WD repeat protein family. WD repeats are</p>

## Target Details

minimally conserved regions of approximately 40 amino acids typically bracketed by gly-his and trp-asn (GH-WD), which may facilitate formation of heterotrimeric or multiprotein complexes. Members of this family are involved in a variety of cellular processes, including cell cycle progression, signal transduction, apoptosis, and gene regulation. This gene is located in the chromosome 10q25-26 region, which is frequently deleted in gliomas and tumors of other tissues, and is disrupted by the t(10;19) translocation rearrangement in glioblastoma cells. The gene location suggests that it is a candidate gene for the tumor suppressor locus.

Molecular Weight:	Observed_MW: 130kDa Calculated_MW: 136kDa
-------------------	--

Gene ID:	55717
----------	-------

UniProt:	<a href="#">Q9BZH6</a>
----------	------------------------

## Application Details

Application Notes:	WB 1:1000 - 1:2000
--------------------	--------------------

Restrictions:	For Research Use only
---------------	-----------------------

## Handling

Concentration:	1 mg/mL
----------------	---------

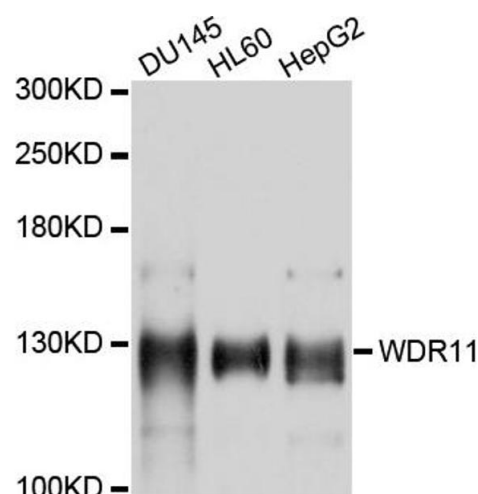
Buffer:	Buffer: PBS with 0.02 % sodium azide, 50 % glycerol, pH 7.3.
---------	--

Preservative:	Sodium azide
---------------	--------------

Precaution of Use:	This product contains Sodium azide: a POISONOUS AND HAZARDOUS SUBSTANCE which should be handled by trained staff only.
--------------------	--

Storage:	-20 °C
----------	--------

Storage Comment:	Store at -20°C. Avoid freeze / thaw cycles.
------------------	---



Western Blotting

**Image 1.** Western blot analysis of extracts of various cell lines, using WDR11 antibody.