

Datasheet for ABIN6567006

anti-RHOC antibody**2** Images[Go to Product page](#)

Overview

Quantity:	200 µL
Target:	RHOC
Reactivity:	Human, Mouse, Rat
Host:	Rabbit
Clonality:	Polyclonal
Application:	Western Blotting (WB), Immunofluorescence (IF)

Product Details

Immunogen:	Recombinant protein of human RHOC
Isotype:	IgG
Purification:	Affinity purification

Target Details

Target:	RHOC
Alternative Name:	RHOC (RHOC Products)
Background:	<p>Synonyms: Aplysia RAS-related homolog 9,ARH9,ARH9,ARHC,H9,MGC1448,MGC61427,Oncogene RHO H9,Ras homolog gene family member C,RAS related homolog 9,RHO C,Rho cDNA clone 9,Rho related GTP binding protein RhoC,Rho-related GTP-binding protein RhoC,rhoC,RhoC GTPase,RHOC,RHOH 9,RHOH9,Small GTP binding protein RhoC</p> <p>Background: This gene encodes a member of the Rho family of small GTPases, which cycle</p>

Target Details

between inactive GDP-bound and active GTP-bound states and function as molecular switches in signal transduction cascades. Rho proteins promote reorganization of the actin cytoskeleton and regulate cell shape, attachment, and motility. The protein encoded by this gene is prenylated at its C-terminus, and localizes to the cytoplasm and plasma membrane. It is thought to be important in cell locomotion. Overexpression of this gene is associated with tumor cell proliferation and metastasis. Multiple alternatively spliced variants, encoding the same protein, have been identified.

Molecular Weight: Observed_MW: 22kDa
Calculated_MW: 22kDa

Gene ID: 389

UniProt: [P08134](#)

Pathways: [WNT Signaling](#), [Cell-Cell Junction Organization](#)

Application Details

Application Notes: WB 1:500 - 1:2000 IF 1:50 - 1:200

Restrictions: For Research Use only

Handling

Concentration: 1 mg/mL

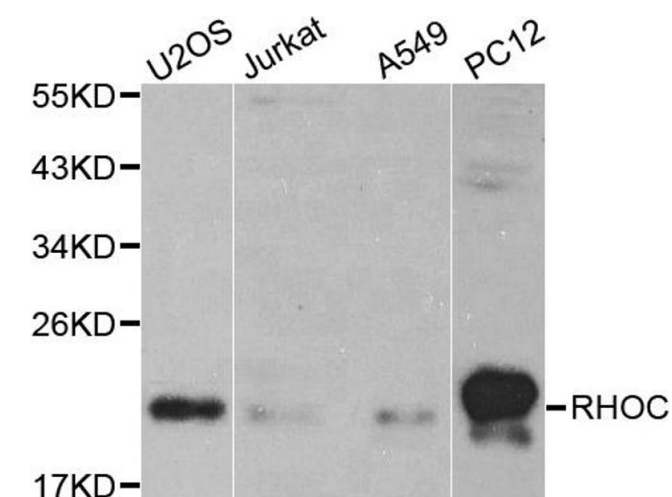
Buffer: Buffer: PBS with 0.02 % sodium azide, 50 % glycerol, pH 7.3.

Preservative: Sodium azide

Precaution of Use: This product contains Sodium azide: a POISONOUS AND HAZARDOUS SUBSTANCE which should be handled by trained staff only.

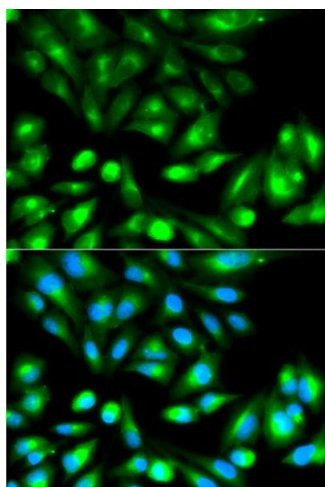
Storage: -20 °C

Storage Comment: Store at -20°C. Avoid freeze / thaw cycles.



Western Blotting

Image 1. Western blot analysis of extracts of various cell lines, using RHOC antibody.



Immunofluorescence

Image 2. Immunofluorescence analysis of HeLa cells using RHOC antibody.