



## Datasheet for ABIN656704 anti-**PLEKHH1** antibody (C-Term)



[Go to Product page](#)

### 3 Images

#### Overview

Quantity:	400 µL
Target:	PLEKHH1
Binding Specificity:	AA 1082-1110, C-Term
Reactivity:	Human
Host:	Rabbit
Clonality:	Polyclonal
Conjugate:	This PLEKHH1 antibody is un-conjugated
Application:	Western Blotting (WB), Flow Cytometry (FACS), Immunohistochemistry (Paraffin-embedded Sections) (IHC (p))

#### Product Details

Immunogen:	This PLEKHH1 antibody is generated from rabbits immunized with a KLH conjugated synthetic peptide between 1082-1110 amino acids from the C-terminal region of human PLEKHH1.
Clone:	RB28784
Isotype:	Ig Fraction
Purification:	This antibody is purified through a protein A column, followed by peptide affinity purification.

#### Target Details

Target:	PLEKHH1
Alternative Name:	PLEKHH1 ( <a href="#">PLEKHH1 Products</a> )

## Target Details

Molecular Weight:	151232
Gene ID:	57475
NCBI Accession:	<a href="#">NP_065766</a>
UniProt:	<a href="#">Q9ULM0</a>

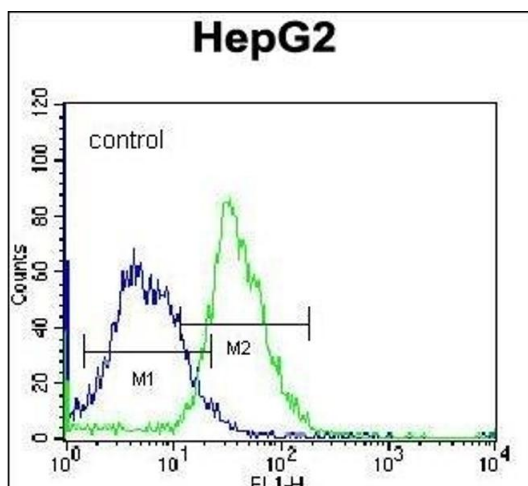
## Application Details

Application Notes:	WB: 1:1000. IHC-P: 1:10~50. FC: 1:10~50
Restrictions:	For Research Use only

## Handling

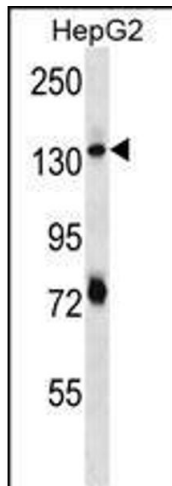
Format:	Liquid
Buffer:	Purified polyclonal antibody supplied in PBS with 0.09 % (W/V) sodium azide.
Preservative:	Sodium azide
Precaution of Use:	This product contains Sodium azide: a POISONOUS AND HAZARDOUS SUBSTANCE which should be handled by trained staff only.
Storage:	4 °C, -20 °C
Storage Comment:	PLEKHH1 Antibody (C-term) can be refrigerated at 2-8 °C for up to 6 months. For long term storage, place the at -20 °C.
Expiry Date:	6 months

## Validation report #102069 for Western Blotting (WB)



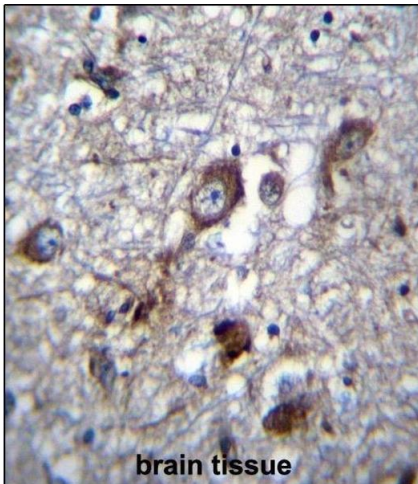
### Flow Cytometry

**Image 1.** PLEKHH1 Antibody (C-term) (ABIN656704 and ABIN2845936) flow cytometric analysis of K562 cells (right histogram) compared to a negative control cell (left histogram). FITC-conjugated donkey-anti-rabbit secondary antibodies were used for the analysis.



### Western Blotting

**Image 2.** PLEKHH1 Antibody (C-term) (ABIN656704 and ABIN2845936) western blot analysis in HepG2 cell line lysates (35 µg/lane). This demonstrates the PLEKHH1 antibody detected the PLEKHH1 protein (arrow).



### Immunohistochemistry (Paraffin-embedded Sections)

**Image 3.** PLEKHH1 Antibody (C-term) (ABIN656704 and ABIN2845936) immunohistochemistry analysis in formalin fixed and paraffin embedded human brain tissue followed by peroxidase conjugation of the secondary antibody and DAB staining. This data demonstrates the use of PLEKHH1 Antibody (C-term) for immunohistochemistry. Clinical relevance has not been evaluated.