

Datasheet for ABIN656715
anti-SULF2 antibody (C-Term)[Go to Product page](#)

1 Image

Overview

Quantity:	400 µL
Target:	SULF2
Binding Specificity:	AA 824-852, C-Term
Reactivity:	Human
Host:	Rabbit
Clonality:	Polyclonal
Conjugate:	This SULF2 antibody is un-conjugated
Application:	Western Blotting (WB)

Product Details

Immunogen:	This SULF2 antibody is generated from rabbits immunized with a KLH conjugated synthetic peptide between 824-852 amino acids from the C-terminal region of human SULF2.
Clone:	RB31333
Isotype:	Ig Fraction
Predicted Reactivity:	M
Purification:	This antibody is purified through a protein A column, followed by peptide affinity purification.

Target Details

Target:	SULF2
Alternative Name:	SULF2 (SULF2 Products)

Target Details

Background: Heparan sulfate proteoglycans (HSPGs) act as coreceptors for numerous heparin-binding growth factors and cytokines and are involved in cell signaling. Heparan sulfate 6-O-endosulfatases, such as SULF2, selectively remove 6-O-sulfate groups from heparan sulfate. This activity modulates the effects of heparan sulfate by altering binding sites for signaling molecules (Dai et al., 2005 [PubMed 16192265]).

Molecular Weight: 100455

Gene ID: 55959

NCBI Accession: [NP_001155313](#), [NP_061325](#), [NP_940998](#)

UniProt: [Q8IWU5](#)

Application Details

Application Notes: WB: 1:1000

Restrictions: For Research Use only

Handling

Format: Liquid

Buffer: Purified polyclonal antibody supplied in PBS with 0.09 % (W/V) sodium azide.

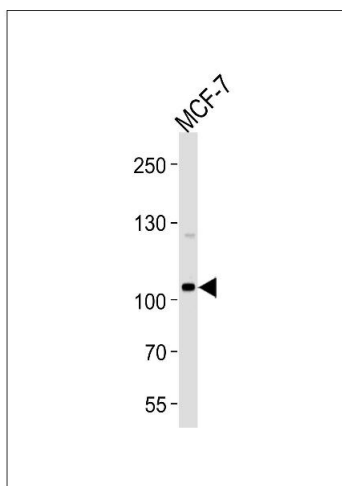
Preservative: Sodium azide

Precaution of Use: This product contains Sodium azide: a POISONOUS AND HAZARDOUS SUBSTANCE which should be handled by trained staff only.

Storage: 4 °C,-20 °C

Storage Comment: SULF2 Antibody (C-term) can be refrigerated at 2-8 °C for up to 6 months. For long term storage, place the at -20 °C.

Expiry Date: 6 months



Western Blotting

Image 1. Western blot analysis of lysate from MCF-7 cell line, using SULF2 Antibody (C-term) (ABIN656715 and ABIN2845944). (ABIN656715 and ABIN2845944) was diluted at 1:1000 at each lane. A goat anti-rabbit IgG H&L(HRP) at 1:5000 dilution was used as the secondary antibody. Lysate at 35 µg per lane.