



Datasheet for ABIN656716
anti-TRUB1 antibody (AA 152-180)



[Go to Product page](#)

2 Images

Overview

Quantity:	400 µL
Target:	TRUB1
Binding Specificity:	AA 152-180
Reactivity:	Human
Host:	Rabbit
Clonality:	Polyclonal
Conjugate:	This TRUB1 antibody is un-conjugated
Application:	Western Blotting (WB), Immunohistochemistry (Paraffin-embedded Sections) (IHC (p))

Product Details

Immunogen:	This TRUB1 antibody is generated from rabbits immunized with a KLH conjugated synthetic peptide between 152-180 amino acids from the Central region of human TRUB1.
Clone:	RB31419
Isotype:	Ig Fraction
Purification:	This antibody is purified through a protein A column, followed by peptide affinity purification.

Target Details

Target:	TRUB1
Alternative Name:	TRUB1 (TRUB1 Products)
Background:	Pseudouridine is an abundant component of rRNAs and tRNAs and is enzymatically generated

Target Details

by isomerization of uridine by pseudouridine synthase (Zucchini et al., 2003 [PubMed 12736709]).

Molecular Weight: 37253

Gene ID: 142940

NCBI Accession: [NP_631908](#)

UniProt: [Q8WWH5](#)

Application Details

Application Notes: WB: 1:1000. IHC-P: 1:10~50

Restrictions: For Research Use only

Handling

Format: Liquid

Buffer: Purified polyclonal antibody supplied in PBS with 0.09 % (W/V) sodium azide.

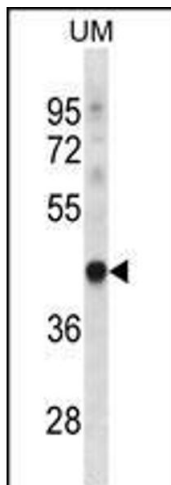
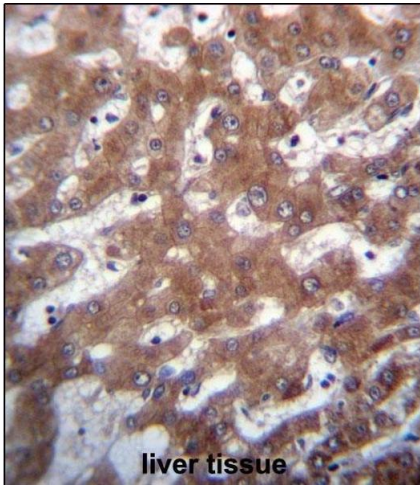
Preservative: Sodium azide

Precaution of Use: This product contains Sodium azide: a POISONOUS AND HAZARDOUS SUBSTANCE which should be handled by trained staff only.

Storage: 4 °C,-20 °C

Storage Comment: TRUB1 Antibody (Center) can be refrigerated at 2-8 °C for up to 6 months. For long term storage, place the at -20 °C.

Expiry Date: 6 months



Immunohistochemistry (Paraffin-embedded Sections)

Image 1. TRUB1 Antibody (Center) (ABIN656716 and ABIN2845945) immunohistochemistry analysis in formalin fixed and paraffin embedded human liver tissue followed by peroxidase conjugation of the secondary antibody and DAB staining. This data demonstrates the use of TRUB1 Antibody (Center) for immunohistochemistry. Clinical relevance has not been evaluated.

Western Blotting

Image 2. TRUB1 Antibody (Center) (ABIN656716 and ABIN2845945) western blot analysis in uterus tumor cell line lysates (35 μ g/lane). This demonstrates the TRUB1 antibody detected the TRUB1 protein (arrow).