

Datasheet for ABIN6567175

anti-LSD1 antibody**3** Images[Go to Product page](#)

Overview

| | |
|--------------|--|
| Quantity: | 200 µL |
| Target: | LSD1 (KDM1A) |
| Reactivity: | Human, Mouse, Rat |
| Host: | Rabbit |
| Clonality: | Polyclonal |
| Conjugate: | This LSD1 antibody is un-conjugated |
| Application: | Western Blotting (WB), Immunofluorescence (IF), Immunoprecipitation (IP) |

Product Details

| | |
|---------------|------------------------------------|
| Immunogen: | Recombinant protein of human KDM1A |
| Isotype: | IgG |
| Purification: | Affinity purification |

Target Details

| | |
|-------------------|---|
| Target: | LSD1 (KDM1A) |
| Alternative Name: | KDM1A (KDM1A Products) |
| Background: | Synonyms: Amine oxidase (flavin containing) domain 2,Amine oxidase,flavin containing,2,AOF2,BHC110,BRAF35 HDAC complex protein BHC110,BRAF35-HDAC complex protein BHC110,BRAF35/HDAC complex,110-kD subunit,CPRF,EC1,FAD binding protein BRAF35 HDAC complex,110 kDa subunit,Flavin-containing amine oxidase domain-containing protein 2,KDM 1,KDM1,Kdm1a,KDM1A,KIAA0601,LSD 1,LSD1,Lysine (K) specific demethylase |

Target Details

1,Lysine (K) specific demethylase 1A,Lysine demethylase 1A,Lysine specific histone demethylase 1,Lysine specific histone demethylase 1A,Lysine-specific demethylase 1,Lysine-specific demethylase 1A,Lysine-specific histone demethylase 1A

Background: This gene encodes a nuclear protein containing a SWIRM domain, a FAD-binding motif, and an amine oxidase domain. This protein is a component of several histone deacetylase complexes, though it silences genes by functioning as a histone demethylase. Alternative splicing results in multiple transcript variants.

Molecular Weight: Observed_MW: 96-117kDa
Calculated_MW: 92kDa/95kDa

Gene ID: 23028

UniProt: [O60341](#)

Pathways: [Regulation of Hormone Metabolic Process](#), [Regulation of Hormone Biosynthetic Process](#), [Negative Regulation of intrinsic apoptotic Signaling](#), [Warburg Effect](#)

Application Details

Application Notes: WB 1:500 - 1:2000 IF 1:50 - 1:200 IP 1:50 - 1:200

Restrictions: For Research Use only

Handling

Concentration: 1 mg/mL

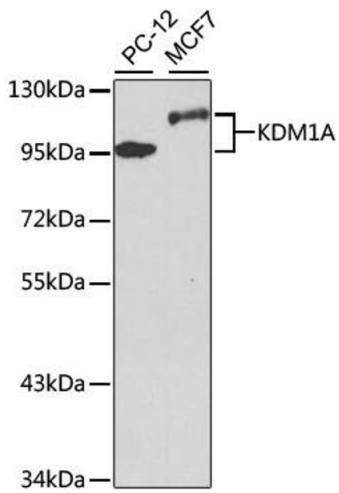
Buffer: Buffer: PBS with 0.02 % sodium azide, 50 % glycerol, pH 7.3.

Preservative: Sodium azide

Precaution of Use: This product contains Sodium azide: a POISONOUS AND HAZARDOUS SUBSTANCE which should be handled by trained staff only.

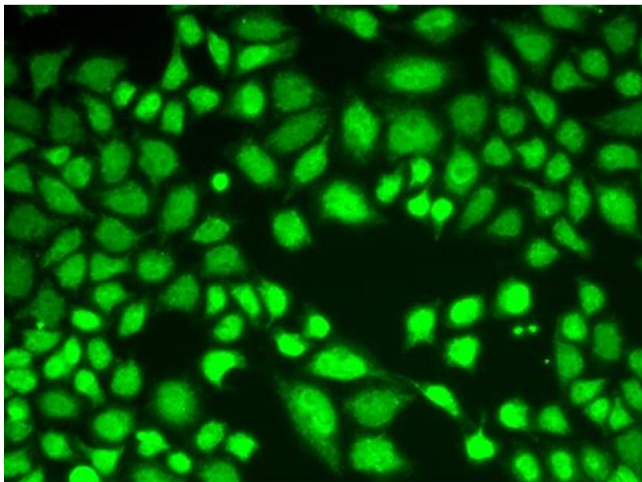
Storage: -20 °C

Storage Comment: Store at -20°C. Avoid freeze / thaw cycles.



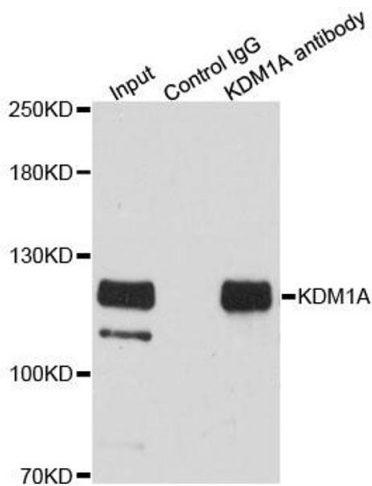
Western Blotting

Image 1. Western blot analysis of extracts of various cell lines, using KDM1A antibody.



Immunofluorescence

Image 2. Immunofluorescence analysis of A549 cells using KDM1A antibody.



Western Blotting

Image 3. Immunoprecipitation analysis of 200ug extracts of HeLa cells using 3ug KDM1A antibody.