

Datasheet for ABIN6567185  
**anti-Glutamate Receptor 3 antibody**



[Go to Product page](#)

2 Images

## Overview

Quantity:	200 µL
Target:	Glutamate Receptor 3 (GRIA3)
Reactivity:	Human, Rat, Mouse
Host:	Rabbit
Clonality:	Polyclonal
Conjugate:	This Glutamate Receptor 3 antibody is un-conjugated
Application:	Western Blotting (WB), Immunofluorescence (IF)

## Product Details

Immunogen:	Recombinant protein of human GRIA3
Isotype:	IgG
Purification:	Affinity purification

## Target Details

Target:	Glutamate Receptor 3 (GRIA3)
Alternative Name:	GRIA3 ( <a href="#">GRIA3 Products</a> )
Background:	Synonyms: AMPA 3,AMPA selective glutamate receptor 3,AMPA-selective glutamate receptor 3,dJ1171F9.1,GluA3,GLUK3,GluR 3,GLUR C,GLUR K3,GluR-3,GluR-C,GluR-K3,GLUR3,GLURC,Glutamate ionotropic receptor AMPA type subunit 3,Glutamate receptor 3,Glutamate receptor C,Glutamate receptor ionotropic AMPA 3,Glutamate receptor ionotropic,Glutamate receptor subunit 3,Glutamate receptor,ionotropic,AMPA 3,GRIA

## Target Details

---

3,Gria3,GRIA3,Ionotropic Glutamate Receptor,MRX94

Background: Glutamate receptors are the predominant excitatory neurotransmitter receptors in the mammalian brain and are activated in a variety of normal neurophysiologic processes.

These receptors are heteromeric protein complexes composed of multiple subunits, arranged to form ligand-gated ion channels. The classification of glutamate receptors is based on their activation by different pharmacologic agonists. The subunit encoded by this gene belongs to a family of AMPA (alpha-amino-3-hydroxy-5-methyl-4-isoxazole propionate)-sensitive glutamate receptors, and is subject to RNA editing (AGA->GGA, R->G). Alternative splicing at this locus results in different isoforms, which may vary in their signal transduction properties.

---

Molecular Weight: Observed\_MW: 101kDa  
Calculated\_MW: 101kDa

---

Gene ID: 2892

---

UniProt: [P42263](#)

---

Pathways: [PI3K-Akt Signaling](#), [cAMP Metabolic Process](#), [Synaptic Membrane](#)

## Application Details

---

Application Notes: WB 1:500 - 1:2000 IF 1:50 - 1:200

Restrictions: For Research Use only

## Handling

---

Concentration: 1 mg/mL

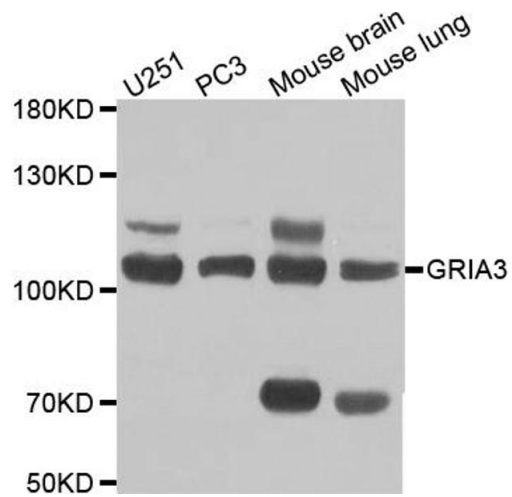
Buffer: Buffer: PBS with 0.02 % sodium azide, 50 % glycerol, pH 7.3.

Preservative: Sodium azide

Precaution of Use: This product contains Sodium azide: a POISONOUS AND HAZARDOUS SUBSTANCE which should be handled by trained staff only.

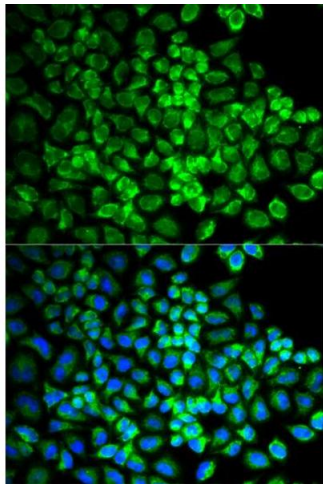
Storage: -20 °C

Storage Comment: Store at -20°C. Avoid freeze / thaw cycles.



### Western Blotting

**Image 1.** Western blot analysis of extracts of various cell lines, using GRIA3 antibody.



### Immunofluorescence

**Image 2.** Immunofluorescence analysis of U2OS cells using GRIA3 antibody.