

Datasheet for ABIN656719  
**anti-PAGE5 antibody (C-Term)**[Go to Product page](#)

## 2 Images

## Overview

Quantity:	400 µL
Target:	PAGE5
Binding Specificity:	AA 102-130, C-Term
Reactivity:	Human
Host:	Rabbit
Clonality:	Polyclonal
Conjugate:	This PAGE5 antibody is un-conjugated
Application:	Western Blotting (WB), Immunohistochemistry (Paraffin-embedded Sections) (IHC (p))

## Product Details

Immunogen:	This PAGE5 antibody is generated from rabbits immunized with a KLH conjugated synthetic peptide between 102-130 amino acids from the C-terminal region of human PAGE5.
Clone:	RB31477
Isotype:	Ig Fraction
Purification:	This antibody is purified through a protein A column, followed by peptide affinity purification.

## Target Details

Target:	PAGE5
Alternative Name:	PAGE5 ( <a href="#">PAGE5 Products</a> )
Background:	This gene is a member of the GAGE family, which is expressed in a variety of tumors and in

## Target Details

some fetal and reproductive tissues. The protein encoded by this gene shares a sequence similarity with other GAGE/PAGE proteins. It may also belong to a family of CT (cancer-testis) antigens. Multiple alternatively spliced transcript variants encoding distinct isoforms have been found for this gene, but the biological validity of some variants have not been determined.

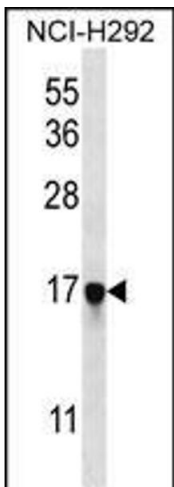
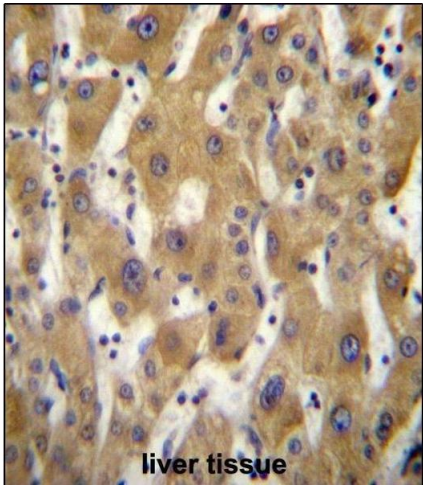
Molecular Weight:	14046
Gene ID:	90737
NCBI Accession:	<a href="#">NP_001013453</a> , <a href="#">NP_569734</a>
UniProt:	<a href="#">Q96GU1</a>

## Application Details

Application Notes:	WB: 1:1000. IHC-P: 1:10~50
Restrictions:	For Research Use only

## Handling

Format:	Liquid
Buffer:	Purified polyclonal antibody supplied in PBS with 0.09 % (W/V) sodium azide.
Preservative:	Sodium azide
Precaution of Use:	This product contains Sodium azide: a POISONOUS AND HAZARDOUS SUBSTANCE which should be handled by trained staff only.
Storage:	4 °C,-20 °C
Storage Comment:	PAGE5 Antibody (C-term) can be refrigerated at 2-8 °C for up to 6 months. For long term storage, place the at -20 °C.
Expiry Date:	6 months



**Immunohistochemistry (Paraffin-embedded Sections)**

**Image 1.** GE5 Antibody (C-term) (ABIN656719 and ABIN2845947) immunohistochemistry analysis in formalin fixed and raffin embedded human liver tissue followed by peroxidase conjugation of the secondary antibody and DAB staining.This data demonstrates the use of GE5 Antibody (C-term) for immunohistochemistry. Clinical relevance has not been evaluated.

**Western Blotting**

**Image 2.** GE5 Antibody (C-term) (ABIN656719 and ABIN2845947) western blot analysis in NCI- cell line lysates (35 µg/lane).This demonstrates the GE5 antibody detected the GE5 protein (arrow).