

Datasheet for ABIN656721
anti-SAAL1 antibody (C-Term)[Go to Product page](#)

2 Images

Overview

Quantity:	400 µL
Target:	SAAL1
Binding Specificity:	AA 357-385, C-Term
Reactivity:	Human
Host:	Rabbit
Clonality:	Polyclonal
Conjugate:	This SAAL1 antibody is un-conjugated
Application:	Western Blotting (WB), Immunohistochemistry (Paraffin-embedded Sections) (IHC (p))

Product Details

Immunogen:	This SAAL1 antibody is generated from rabbits immunized with a KLH conjugated synthetic peptide between 357-385 amino acids from the C-terminal region of human SAAL1.
Clone:	RB31533
Isotype:	Ig Fraction
Purification:	This antibody is purified through a protein A column, followed by peptide affinity purification.

Target Details

Target:	SAAL1
Alternative Name:	SAAL1 (SAAL1 Products)
Background:	The function of this protein remains unknown.

Target Details

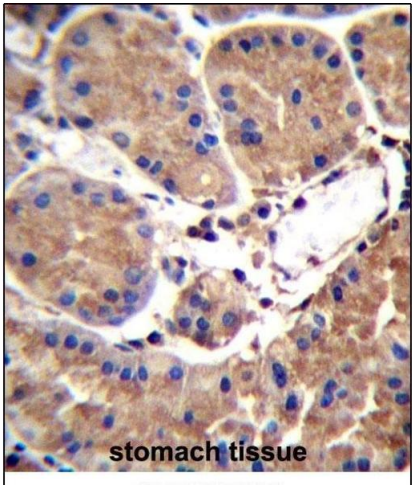
Molecular Weight:	53558
Gene ID:	113174
NCBI Accession:	NP_612430
UniProt:	Q96ER3
Pathways:	SARS-CoV-2 Protein Interactome

Application Details

Application Notes:	WB: 1:1000. IHC-P: 1:10~50
Restrictions:	For Research Use only

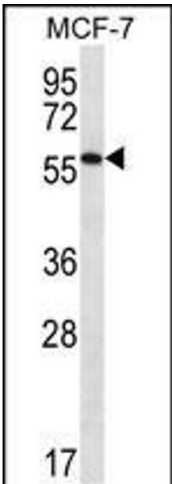
Handling

Format:	Liquid
Buffer:	Purified polyclonal antibody supplied in PBS with 0.09 % (W/V) sodium azide.
Preservative:	Sodium azide
Precaution of Use:	This product contains Sodium azide: a POISONOUS AND HAZARDOUS SUBSTANCE which should be handled by trained staff only.
Storage:	4 °C,-20 °C
Storage Comment:	SAAL1 Antibody (C-term) can be refrigerated at 2-8 °C for up to 6 months. For long term storage, place the at -20 °C.
Expiry Date:	6 months



Immunohistochemistry (Paraffin-embedded Sections)

Image 1. SL1 Antibody (C-term) (ABIN656721 and ABIN2845948) immunohistochemistry analysis in formalin fixed and paraffin embedded human stomach tissue followed by peroxidase conjugation of the secondary antibody and DAB staining. This data demonstrates the use of SL1 Antibody (C-term) for immunohistochemistry. Clinical relevance has not been evaluated.



Western Blotting

Image 2. SL1 Antibody (C-term) (ABIN656721 and ABIN2845948) western blot analysis in MCF-7 cell line lysates (35 µg/lane). This demonstrates the SL1 antibody detected the SL1 protein (arrow).