

Datasheet for ABIN656726  
**anti-C10orf2 antibody (C-Term)**

## 2 Images

[Go to Product page](#)

## Overview

Quantity:	400 µL
Target:	C10orf2 (C10ORF2)
Binding Specificity:	AA 656-684, C-Term
Reactivity:	Human
Host:	Rabbit
Clonality:	Polyclonal
Conjugate:	This C10orf2 antibody is un-conjugated
Application:	Western Blotting (WB), Immunohistochemistry (Paraffin-embedded Sections) (IHC (p))

## Product Details

Immunogen:	This C10orf2 antibody is generated from rabbits immunized with a KLH conjugated synthetic peptide between 656-684 amino acids from the C-terminal region of human C10orf2.
Clone:	RB32016
Isotype:	Ig Fraction
Purification:	This antibody is purified through a protein A column, followed by peptide affinity purification.

## Target Details

Target:	C10orf2 (C10ORF2)
Alternative Name:	C10orf2 ( <a href="#">C10ORF2 Products</a> )
Background:	This gene encodes a hexameric DNA helicase which unwinds short stretches of double-

## Target Details

stranded DNA in the 5' to 3' direction and, along with mitochondrial single-stranded DNA binding protein and mtDNA polymerase gamma, is thought to play a key role in mtDNA replication. The protein localizes to the mitochondrial matrix and mitochondrial nucleoids. Mutations in this gene cause infantile onset spinocerebellar ataxia (IOSCA) and progressive external ophthalmoplegia (PEO) and are also associated with several mitochondrial depletion syndromes. Alternative splicing results in multiple transcript variants encoding distinct isoforms.

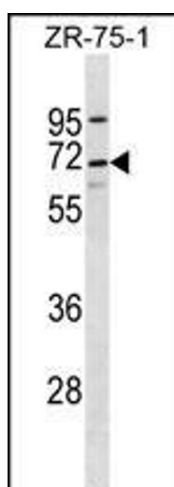
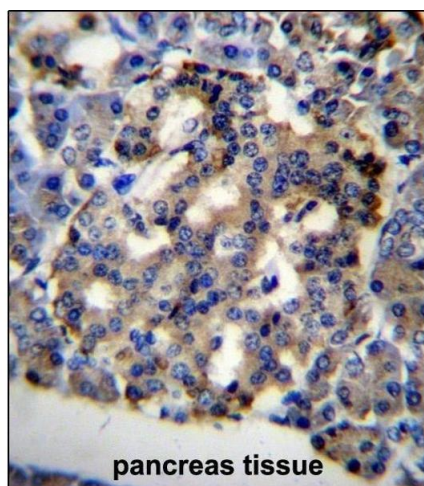
Molecular Weight:	77154
Gene ID:	56652
NCBI Accession:	<a href="#">NP_001157284</a> , <a href="#">NP_068602</a>
UniProt:	<a href="#">Q96RR1</a>

## Application Details

Application Notes:	WB: 1:1000. IHC-P: 1:10~50
Restrictions:	For Research Use only

## Handling

Format:	Liquid
Buffer:	Purified polyclonal antibody supplied in PBS with 0.09 % (W/V) sodium azide.
Preservative:	Sodium azide
Precaution of Use:	This product contains Sodium azide: a POISONOUS AND HAZARDOUS SUBSTANCE which should be handled by trained staff only.
Storage:	4 °C,-20 °C
Storage Comment:	C10orf2 Antibody (C-term) can be refrigerated at 2-8 °C for up to 6 months. For long term storage, place the at -20 °C.
Expiry Date:	6 months



#### Immunohistochemistry (Paraffin-embedded Sections)

**Image 1.** C10orf2 Antibody (C-term) (ABIN656726 and ABIN2845951) immunohistochemistry analysis in formalin fixed and paraffin embedded human pancreas tissue followed by peroxidase conjugation of the secondary antibody and DAB staining. This data demonstrates the use of C10orf2 Antibody (C-term) for immunohistochemistry. Clinical relevance has not been evaluated.

#### Western Blotting

**Image 2.** C10orf2 Antibody (C-term) (ABIN656726 and ABIN2845951) western blot analysis in ZR-75-1 cell line lysates (35 µg/lane). This demonstrates the C10orf2 antibody detected the C10orf2 protein (arrow).