

Datasheet for ABIN656732

**anti-CTDNEP1A antibody (AA 131-160)****3** Images[Go to Product page](#)

## Overview

Quantity:	400 µL
Target:	CTDNEP1A
Binding Specificity:	AA 131-160
Reactivity:	Human
Host:	Rabbit
Clonality:	Polyclonal
Conjugate:	This CTDNEP1A antibody is un-conjugated
Application:	Western Blotting (WB), Immunohistochemistry (Paraffin-embedded Sections) (IHC (p)), Flow Cytometry (FACS)

## Product Details

Immunogen:	This DULLARD antibody is generated from rabbits immunized with a KLH conjugated synthetic peptide between 131-160 amino acids from the Central region of human DULLARD.
Clone:	RB32296
Isotype:	Ig Fraction
Predicted Reactivity:	B, M, Rat
Purification:	This antibody is purified through a protein A column, followed by peptide affinity purification.

## Target Details

Target:	CTDNEP1A
---------	----------

## Target Details

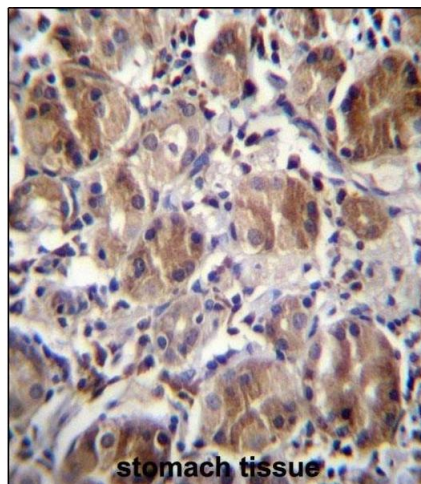
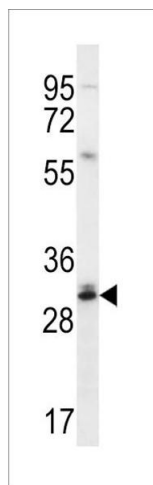
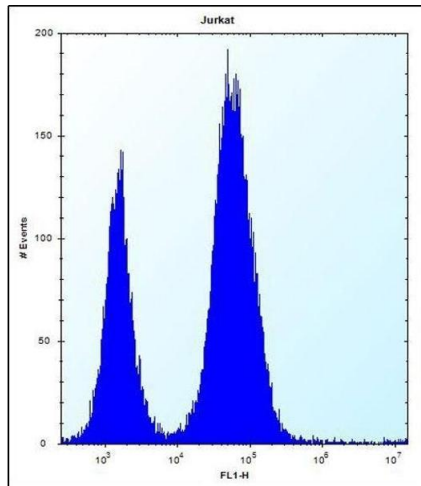
Alternative Name:	DULLARD ( <a href="#">CTDNEP1A Products</a> )
Background:	Serine/threonine phosphatase which may be required for proper nuclear membrane morphology. Involved in LPIN1 dephosphorylation. May antagonize BMP signaling.
Molecular Weight:	28377
Gene ID:	23399
NCBI Accession:	<a href="#">NP_001137247</a> , <a href="#">NP_056158</a>
UniProt:	<a href="#">O95476</a>

## Application Details

Application Notes:	WB: 1:1000. IHC-P: 1:10~50. FC: 1:10~50
Restrictions:	For Research Use only

## Handling

Format:	Liquid
Buffer:	Purified polyclonal antibody supplied in PBS with 0.09 % (W/V) sodium azide.
Preservative:	Sodium azide
Precaution of Use:	This product contains Sodium azide: a POISONOUS AND HAZARDOUS SUBSTANCE which should be handled by trained staff only.
Storage:	4 °C, -20 °C
Storage Comment:	DULLARD Antibody (Center) can be refrigerated at 2-8 °C for up to 6 months. For long term storage, place the at -20 °C.
Expiry Date:	6 months



### Flow Cytometry

**Image 1.** DULLARD Antibody (Center) (ABIN656732 and ABIN2845956) flow cytometric analysis of Jurkat cells (right histogram) compared to a negative control cell (left histogram). FITC-conjugated donkey-anti-rabbit secondary antibodies were used for the analysis.

### Western Blotting

**Image 2.** DULLARD Antibody (Center) (ABIN656732 and ABIN2845956) western blot analysis in Jurkat cell line lysates (35 µg/lane). This demonstrates the DULLARD antibody detected the DULLARD protein (arrow).

### Immunohistochemistry (Paraffin-embedded Sections)

**Image 3.** DULLARD Antibody (Center) (ABIN656732 and ABIN2845956) immunohistochemistry analysis in formalin fixed and paraffin embedded human stomach tissue followed by peroxidase conjugation of the secondary antibody and DAB staining. This data demonstrates the use of DULLARD Antibody (Center) for immunohistochemistry. Clinical relevance has not been evaluated.