

Datasheet for ABIN656735
anti-SLC8A3 antibody (AA 585-614)[Go to Product page](#)

2 Images

Overview

Quantity:	400 µL
Target:	SLC8A3
Binding Specificity:	AA 585-614
Reactivity:	Human
Host:	Rabbit
Clonality:	Polyclonal
Conjugate:	This SLC8A3 antibody is un-conjugated
Application:	Western Blotting (WB), Immunohistochemistry (Paraffin-embedded Sections) (IHC (p))

Product Details

Immunogen:	This SLC8A3 antibody is generated from rabbits immunized with a KLH conjugated synthetic peptide between 585-614 amino acids of human SLC8A3.
Clone:	RB32328
Isotype:	IgG
Purification:	This antibody is purified through a protein A column, followed by peptide affinity purification.

Target Details

Target:	SLC8A3
Alternative Name:	SLC8A3 (SLC8A3 Products)
Background:	This gene encodes a member of the sodium/calcium exchanger integral membrane protein

Target Details

family. Three mammalian isoforms in family 8 have been identified. Na⁺/Ca²⁺ exchange proteins are involved in maintaining Ca²⁺ homeostasis in a wide variety of cell types. The protein is regulated by intracellular calcium ions and is found in both the plasma membrane and intracellular organellar membranes, where exchange of Na⁺ for Ca²⁺ occurs in an electrogenic manner. Alternative splicing has been observed for this gene and multiple variants have been described.

Molecular Weight: 103010

Gene ID: 6547

NCBI Accession: [NP_001123889](#), [NP_150287](#), [NP_489479](#), [NP_891977](#), [NP_891981](#), [NP_892114](#)

UniProt: [P57103](#)

Application Details

Application Notes: WB: 1:1000. IHC-P: 1:10~50

Restrictions: For Research Use only

Handling

Format: Liquid

Buffer: Purified polyclonal antibody supplied in PBS with 0.09 % (W/V) sodium azide.

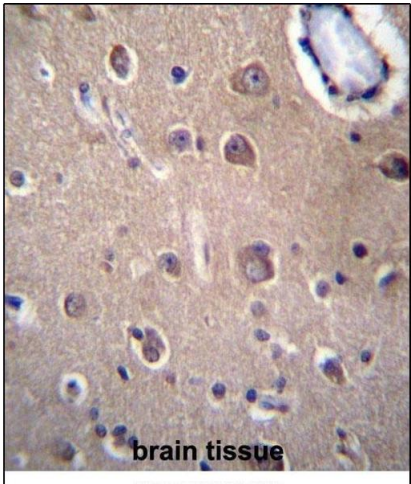
Preservative: Sodium azide

Precaution of Use: This product contains Sodium azide: a POISONOUS AND HAZARDOUS SUBSTANCE which should be handled by trained staff only.

Storage: 4 °C, -20 °C

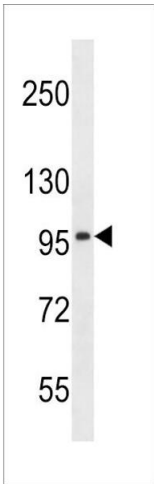
Storage Comment: SLC8A3 Antibody (C-term) can be refrigerated at 2-8 °C for up to 6 months. For long term storage, place the at -20 °C.

Expiry Date: 6 months



Immunohistochemistry (Paraffin-embedded Sections)

Image 1. SLC8A3 Antibdy (C-term) (ABIN656735 and ABIN2845959) immunohistochemistry analysis in formalin fixed and paraffin embedded human brain tissue followed by peroxidase conjugation of the secondary antibody and DAB staining.This data demonstrates the use of SLC8A3 Antibdy (C-term) for immunohistochemistry. Clinical relevance has not been evaluated.



Western Blotting

Image 2. SLC8A3 Antibody (C-term) (ABIN656735 and ABIN2845959) western blot analysis in NCI- cell line lysates (35 µg/lane).This demonstrates the SLC8A3 antibody detected the SLC8A3 protein (arrow).