



[Go to Product page](#)

Datasheet for ABIN656741
anti-SYTL1 antibody (AA 296-325)

1 Image

Overview

Quantity:	400 µL
Target:	SYTL1
Binding Specificity:	AA 296-325
Reactivity:	Human
Host:	Rabbit
Clonality:	Polyclonal
Application:	Western Blotting (WB)

Product Details

Immunogen:	This SYTL1 antibody is generated from rabbits immunized with a KLH conjugated synthetic peptide between 296-325 amino acids from the Central region of human SYTL1.
Clone:	RB32477
Isotype:	Ig Fraction
Purification:	This antibody is purified through a protein A column, followed by peptide affinity purification.

Target Details

Target:	SYTL1
Alternative Name:	SYTL1 (SYTL1 Products)
Background:	SYTL1 may play a role in vesicle trafficking (By similarity). It binds phosphatidylinositol 3,4,5-triphosphate. Acts as a RAB27A effector protein and may play a role in cytotoxic granule exocytosis in lymphocytes (By similarity).

Target Details

Molecular Weight:	61857
Gene ID:	84958
NCBI Accession:	NP_001180237 , NP_116261
UniProt:	Q8IYJ3

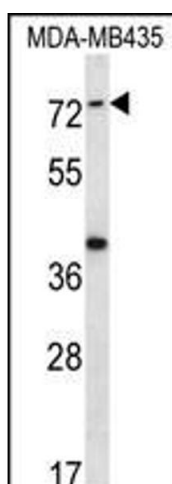
Application Details

Application Notes:	WB: 1:1000
Restrictions:	For Research Use only

Handling

Format:	Liquid
Buffer:	Purified polyclonal antibody supplied in PBS with 0.09 % (W/V) sodium azide.
Preservative:	Sodium azide
Precaution of Use:	This product contains Sodium azide: a POISONOUS AND HAZARDOUS SUBSTANCE which should be handled by trained staff only.
Storage:	4 °C, -20 °C
Storage Comment:	SYTL1 Antibody (Center) can be refrigerated at 2-8 °C for up to 6 months. For long term storage, place the at -20 °C.
Expiry Date:	6 months

Images



Western Blotting

Image 1. SYTL1 Antibody (Center) (ABIN656741 and ABIN2845964) western blot analysis in MDA-M cell line lysates (35 µg/lane). This demonstrates the SYTL1 antibody detected the SYTL1 protein (arrow).