

Datasheet for ABIN6567426

**anti-SBF1 antibody**[Go to Product page](#)**1** Image

## Overview

Quantity:	200 µL
Target:	SBF1
Reactivity:	Human, Rat
Host:	Rabbit
Clonality:	Polyclonal
Conjugate:	This SBF1 antibody is un-conjugated
Application:	Western Blotting (WB)

## Product Details

Immunogen:	Recombinant protein of human SBF1
Isotype:	IgG
Purification:	Affinity purification

## Target Details

Target:	SBF1
Alternative Name:	SBF1 ( <a href="#">SBF1 Products</a> )
Background:	<p>Synonyms: C22:RP4-579N16.2,CMT4B3,DENN/MADD domain containing 7A,DENND7A,MTMR5,Myotubularin related 5,Myotubularin-related protein 5,SET-binding factor 1</p> <p>Background: This gene encodes a member of the protein-tyrosine phosphatase family. However, the encoded protein does not appear to be a catalytically active phosphatase because</p>

## Target Details

it lacks several amino acids in the catalytic pocket. This protein contains a Guanine nucleotide exchange factor (GEF) domain which is necessary for its role in growth and differentiation. Mutations in this gene have been associated with Charcot-Marie-Tooth disease 4B3. Pseudogenes of this gene have been defined on chromosomes 1 and 8.

Molecular Weight: Observed\_MW: 208kDa  
Calculated\_MW: 208kDa/211kDa

Gene ID: 6305

UniProt: [O95248](#)

## Application Details

Application Notes: WB 1:500 - 1:2000

Restrictions: For Research Use only

## Handling

Concentration: 1 mg/mL

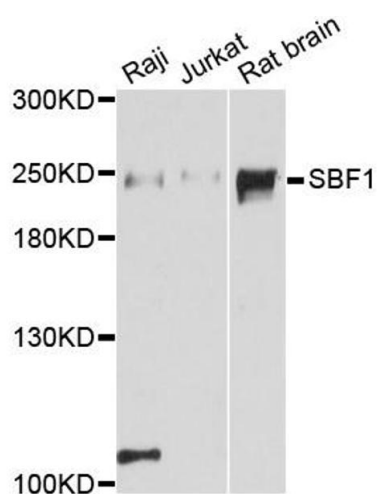
Buffer: Buffer: PBS with 0.02 % sodium azide, 50 % glycerol, pH 7.3.

Preservative: Sodium azide

Precaution of Use: This product contains Sodium azide: a POISONOUS AND HAZARDOUS SUBSTANCE which should be handled by trained staff only.

Storage: -20 °C

Storage Comment: Store at -20°C. Avoid freeze / thaw cycles.



Western Blotting

**Image 1.** Western blot analysis of extracts of various cell lines, using SBF1 antibody.