



[Go to Product page](#)

Datasheet for ABIN656744  
**anti-RFX2 antibody (C-Term)**

1 Image

### Overview

Quantity:	400 µL
Target:	RFX2
Binding Specificity:	AA 669-698, C-Term
Reactivity:	Human
Host:	Rabbit
Clonality:	Polyclonal
Conjugate:	This RFX2 antibody is un-conjugated
Application:	Western Blotting (WB)

### Product Details

Immunogen:	This RFX2 antibody is generated from rabbits immunized with a KLH conjugated synthetic peptide between 669-698 amino acids from the C-terminal region of human RFX2.
Clone:	RB32482
Isotype:	Ig Fraction
Purification:	This antibody is purified through a protein A column, followed by peptide affinity purification.

### Target Details

Target:	RFX2
Alternative Name:	RFX2 ( <a href="#">RFX2 Products</a> )
Background:	This gene is a member of the regulatory factor X gene family, which encodes transcription

## Target Details

---

factors that contain a highly-conserved winged helix DNA binding domain. The protein encoded by this gene is structurally related to regulatory factors X1, X3, X4, and X5. It is a transcriptional activator that can bind DNA as a monomer or as a heterodimer with other RFX family members. This protein can bind to cis elements in the promoter of the IL-5 receptor alpha gene. Two transcript variants encoding different isoforms have been described for this gene, and both variants utilize alternative polyadenylation sites.

---

Molecular Weight: 79987

---

Gene ID: 5990

---

NCBI Accession: [NP\\_000626](#), [NP\\_602309](#)

---

UniProt: [P48378](#)

## Application Details

---

Application Notes: WB: 1:1000

---

Restrictions: For Research Use only

## Handling

---

Format: Liquid

---

Buffer: Purified polyclonal antibody supplied in PBS with 0.09 % (W/V) sodium azide.

---

Preservative: Sodium azide

---

Precaution of Use: This product contains Sodium azide: a POISONOUS AND HAZARDOUS SUBSTANCE which should be handled by trained staff only.

---

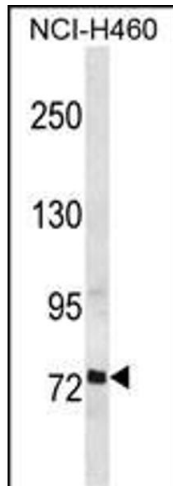
Storage: 4 °C, -20 °C

---

Storage Comment: RFX2 Antibody (C-term) can be refrigerated at 2-8 °C for up to 6 months. For long term storage, place the at -20 °C.

---

Expiry Date: 6 months



#### Western Blotting

**Image 1.** RFX2 Antibody (C-term) (ABIN656744 and ABIN2845966) western blot analysis in NCI- cell line lysates (35 µg/lane). This demonstrates the RFX2 antibody detected the RFX2 protein (arrow).