

Datasheet for ABIN656746
anti-RBM28 antibody (N-Term)[Go to Product page](#)

1 Image

Overview

Quantity:	400 µL
Target:	RBM28
Binding Specificity:	AA 62-91, N-Term
Reactivity:	Human
Host:	Rabbit
Clonality:	Polyclonal
Conjugate:	This RBM28 antibody is un-conjugated
Application:	Western Blotting (WB)

Product Details

Immunogen:	This RBM28 antibody is generated from rabbits immunized with a KLH conjugated synthetic peptide between 62-91 amino acids from the N-terminal region of human RBM28.
Clone:	RB32488
Isotype:	Ig Fraction
Purification:	This antibody is purified through a protein A column, followed by peptide affinity purification.

Target Details

Target:	RBM28
Alternative Name:	RBM28 (RBM28 Products)
Background:	The protein encoded by this gene is a specific nucleolar component of the spliceosomal small

Target Details

nuclear ribonucleoprotein (snRNP) complexes . It specifically associates with U1, U2, U4, U5, and U6 small nuclear RNAs (snRNAs), possibly coordinating their transition through the nucleolus. Mutation in this gene causes alopecia, progressive neurological defects, and endocrinopathy (ANE syndrome), a pleiotropic and clinically heterogeneous disorder. Alternatively spliced transcript variants encoding different isoforms have been found for this gene.

Molecular Weight: 85738

Gene ID: 55131

NCBI Accession: [NP_001159607](#), [NP_060547](#)

UniProt: [Q9NW13](#)

Pathways: [SARS-CoV-2 Protein Interactome](#)

Application Details

Application Notes: WB: 1:1000

Restrictions: For Research Use only

Handling

Format: Liquid

Buffer: Purified polyclonal antibody supplied in PBS with 0.09 % (W/V) sodium azide.

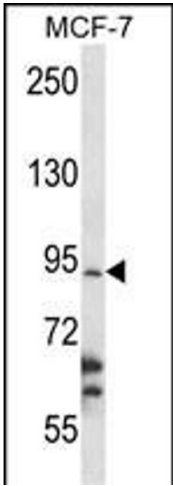
Preservative: Sodium azide

Precaution of Use: This product contains Sodium azide: a POISONOUS AND HAZARDOUS SUBSTANCE which should be handled by trained staff only.

Storage: 4 °C, -20 °C

Storage Comment: RBM28 Antibody (N-term) can be refrigerated at 2-8 °C for up to 6 months. For long term storage, place the at -20 °C.

Expiry Date: 6 months



Western Blotting

Image 1. RBM28 Antibody (N-term) (ABIN656746 and ABIN2845968) western blot analysis in MCF-7 cell line lysates (35 µg/lane). This demonstrates the RBM28 antibody detected the RBM28 protein (arrow).